

ANNEX F



BUSHBABY, EXPLORER AND SAFARI AIRCRAFT ILLUSTRATED PARTS CATALOGUE

TABLE OF CONTENTS

	Page no
1. Control column assembly	5
2. Control stick assembly	6
3. Control bell-crank assembly	7
4. Flap mixer assembly	8
5. Aileron mixer assembly	9
6. Flapperon control horn assembly	10
7. Flap handle assembly	11
8. Idler arm assembly	12
9. Elevator tube assembly	13
10. Elevator tube end fitting assembly	14
11. Hinge pin assembly	15
12. Rudder cable, pedal assembly	16
13. Rudder cable, rudder assembly	17
14. Parts & components list	18

LIST OF EFFECTIVE PAGES

PAGE	DATE	REVISION STATUS
1	2010/12	Original
2	2010/12	Original
3	2010/12	Original
4	2010/12	Original
5	2010/12	Original
6	2010/12	Original
7	2010/12	Original
8	2010/12	Original
9	2010/12	Original
10	2010/12	Original
11	2010/12	Original
12	2010/12	Original
13	2010/12	Original
14	2010/12	Original
15	2010/12	Original
16	2010/12	Original
17	2010/12	Original
18	2010/12	Original
19	2010/12	Original
20	2010/12	Original
21	2010/12	Original
22	2010/12	Original
23	2010/12	Original
24	2010/12	Original

AMENDMENT RECORD

AMENDMENT NO	PAGE AFFECTED	RECORDED BY
Original	1	S Coetzee
Original	2	S Coetzee
Original	3	S Coetzee
Original	4	S Coetzee
Original	5	S Coetzee
Original	6	S Coetzee
Original	7	S Coetzee
Original	8	S Coetzee
Original	9	S Coetzee
Original	10	S Coetzee
Original	11	S Coetzee
Original	12	S Coetzee
Original	13	S Coetzee
Original	14	S Coetzee
Original	15	S Coetzee
Original	16	S Coetzee
Original	17	S Coetzee
Original	18	S Coetzee
Original	19	S Coetzee
Original	20	S Coetzee
Original	21	S Coetzee
Original	22	S Coetzee
Original	23	S Coetzee
Original	24	S Coetzee

BUSHBABY / EXPLORER / SAFARI PARTS CATALOGUE

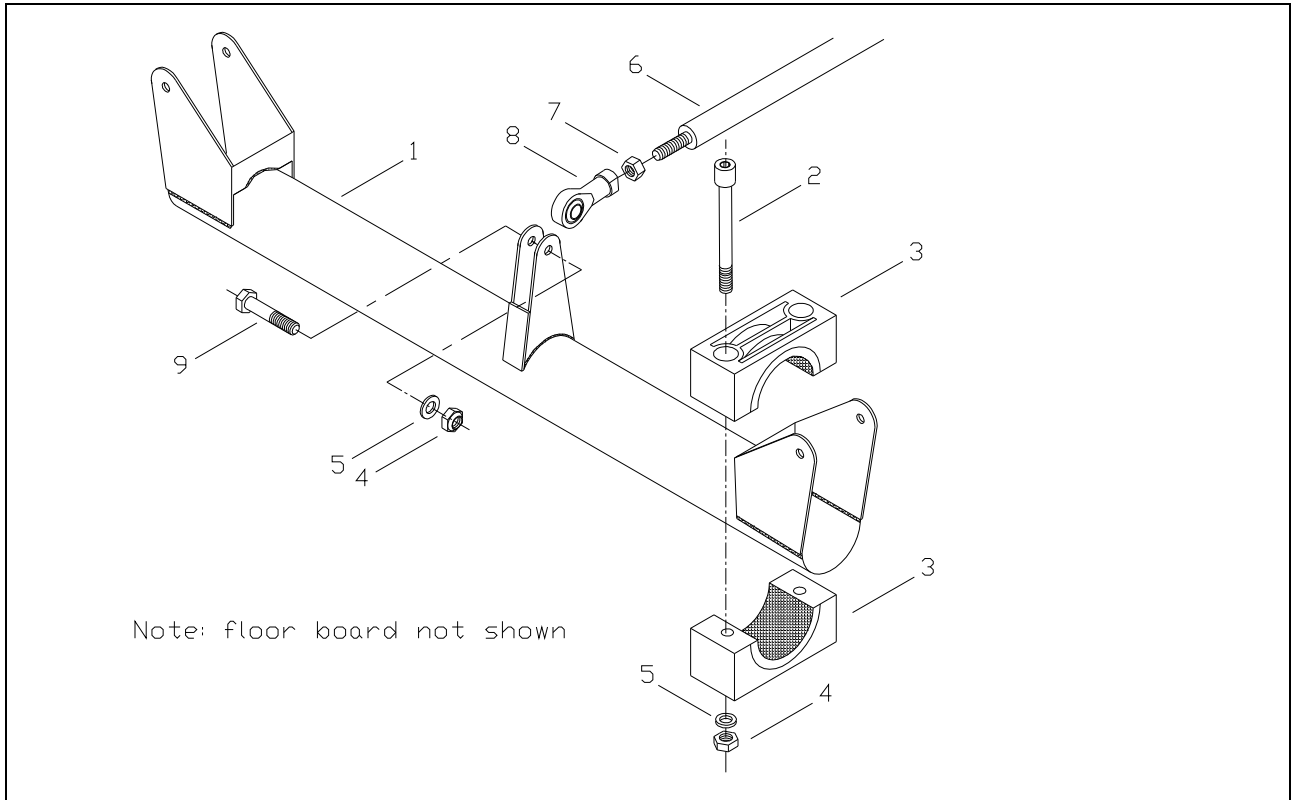


Fig Ref No:	Part Number	Part description	Qty Per assembly	Notes
1	FCC-1A	Control column housing 440mm	1	For Bushbaby and Explorer
	FCC-1B	Control column housing 490mm	1	For Safari
2	C0665	Cap screw M6 x 65	4	
3	FBR-1	Nylon block. Blue	2	Set (off 2)
4	NY006	Nylock M6	5	
5	W006	Washer M6	5	
6	FCT-6	Push-pull tube. Elevator, front half	1	
7	N006	Nut M6	1	
8	FC-1	Rod-end bearing. female	1	
9	B0625	Bolt 6 x 25	1	

Control column assembly

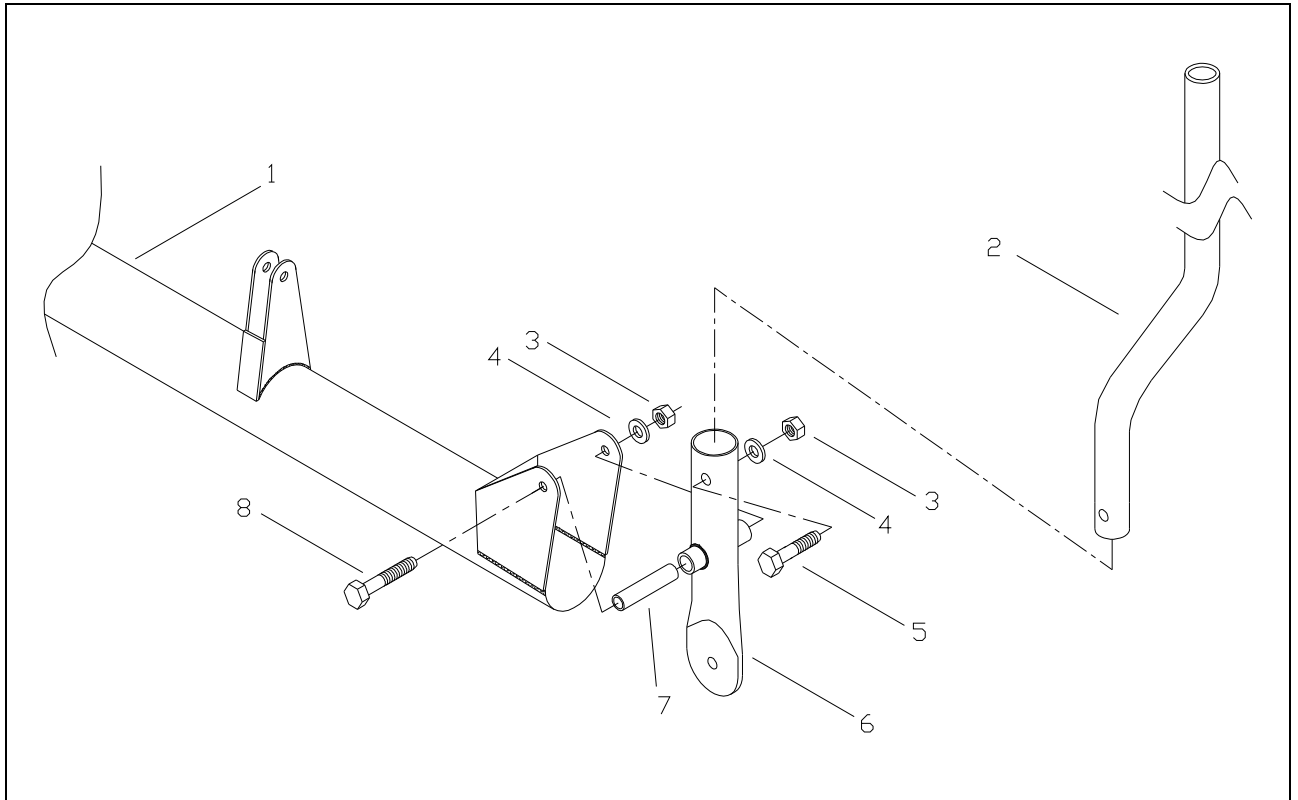


Fig Ref No:	Part Number	Part description	Qty Per assembly	Notes
1	FCC-1A	Control column housing 440mm	1	Bushbaby and Explorer
	FCC-1B	Control column housing 490mm	1	Safari
2	FCS-B	Control stick	1	
3	NY006	Nylock M6	2	
4	W006	Washer M6	2	
5	B0635F1	Bolt 6 x 35	1	
6	FCS-A	Control stick housing	2	
7	BB8039	Bronze bush 8 x 39mm	2	
8	B0660	Bolt 6 x60	2	

Control Stick assembly

BUSHBABY / EXPLORER / SAFARI PARTS CATALOGUE

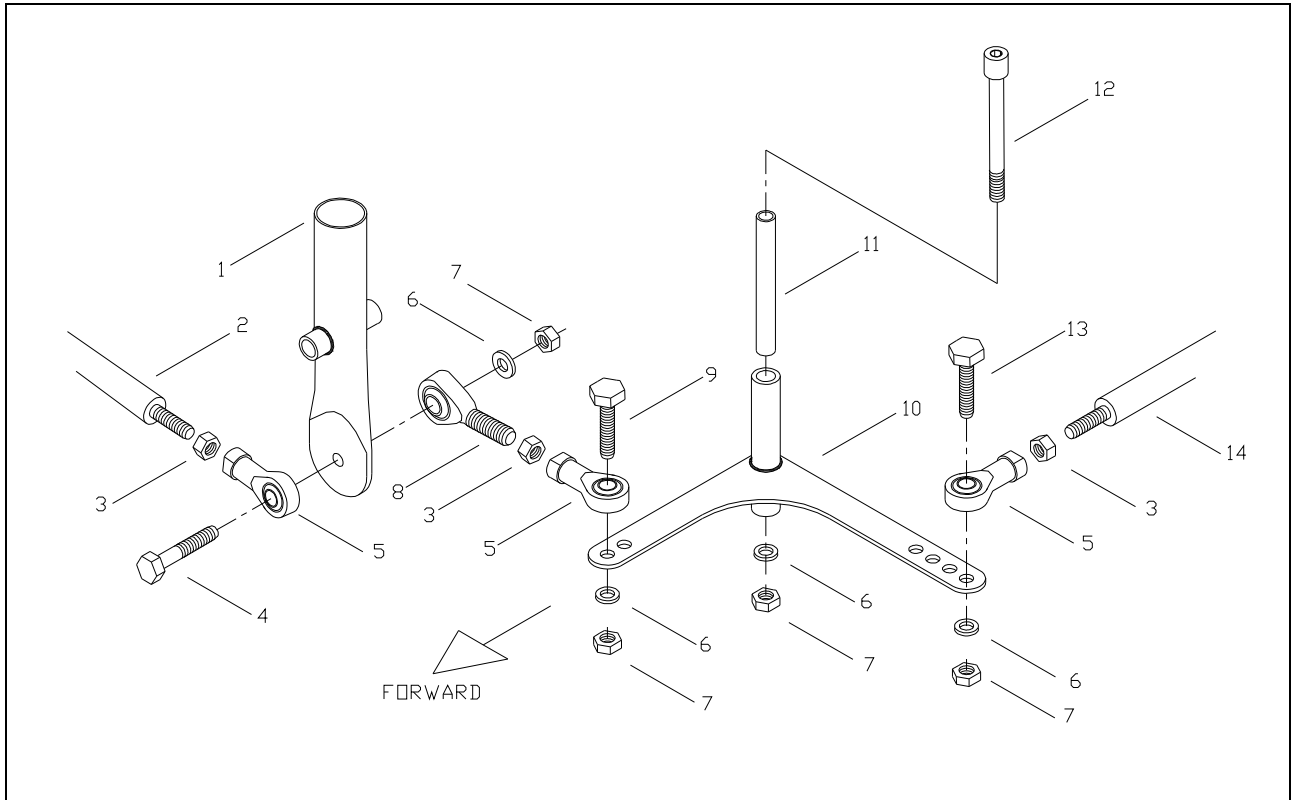


Fig Ref No:	Part Number	Part description	Qty Per assembly	Notes
1	FCS-A	Control stick housing	2	
2	FCT-1A	Push-pull tube control stick 350mm	1	Bushbaby and Explorer
	FCT-1B	Push-pull tube control stick 410mm	1	Safari
3	N006	Nut M6	3	
4	B0630	Bolt M6 x 30	1	
5	FC-1	Rod-end bearing. Female M6	3	
6	W006	Washer M6	4	
7	NY006	Nylock M6	4	
8	FC-2	Rod-end bearing. Male M6	1	
9	B0625	Bolt M6 x 25	1	
10	FBC-1	Bell crank. Aileron	1	
11	BB069	Bronze bush. 8 x 69mm	1	
12	B0680F1	Bolt M6 x 80	1	
13	B0625	Bolt m6 x 25	1	
14	FCT-2A	Push-pull tube. Aileron 780mm	1	Bushbaby and Explorer
	FCT-2B	Push-pull tube S-shape. Aileron 830mm	1	Safari

Control bell-crank assembly

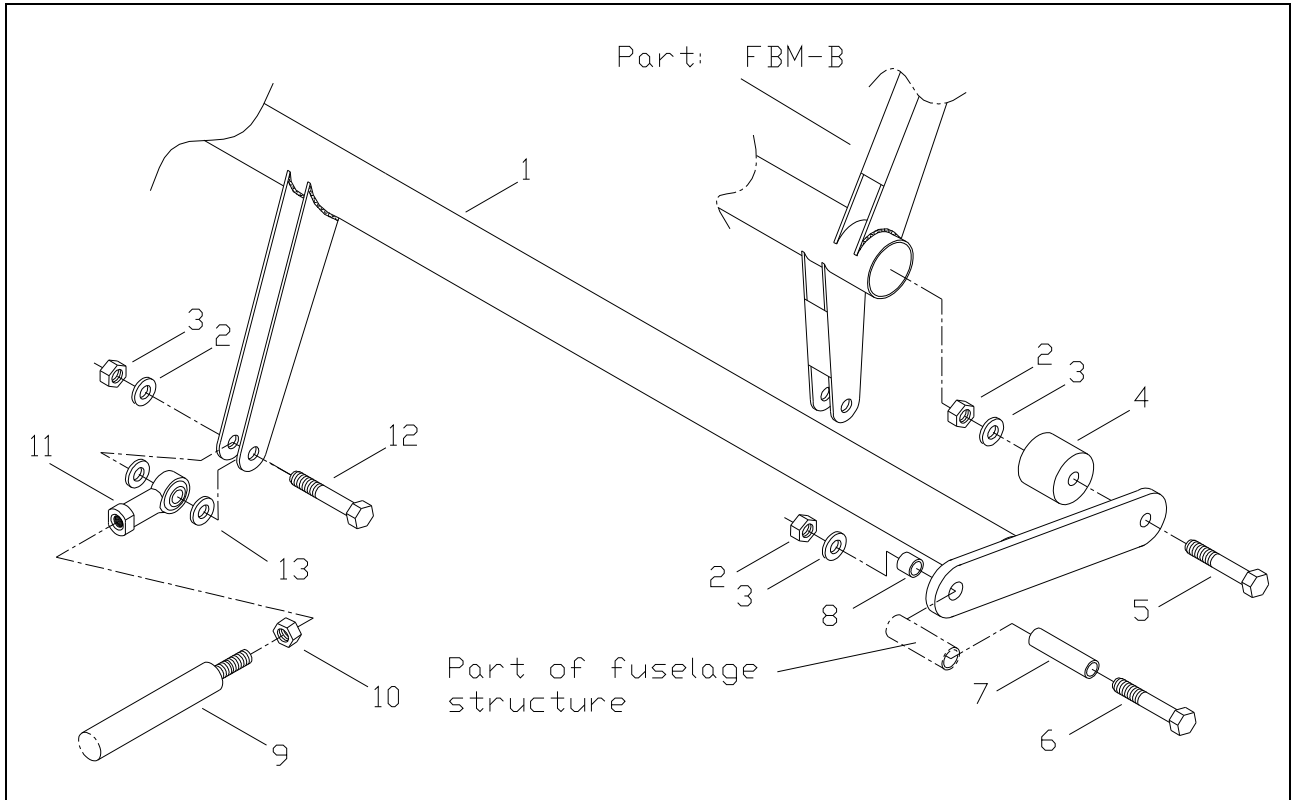


Fig Ref No:	Part Number	Part description	Qty Per assembly	Notes
1	FBM-A	Mixer, flap	1	
2	NY006	Nylock, M6	4	
3	W006	Washer, M6	4	
4	FBR-2	Bearing, ø 23 x 20. Nylon	2	
5	B0635	Bolt 6 x 35	2	
6	B0650	Bolt 6 x 50. FBM-A / fuselage	2	
7	FBR-4	Nylon tube. Ø 8 x 40mm	2	
8	BB8007	Bronze Bush ø 8 x 7mm	2	
9	FCT-3A	Push-Pull tube, 660mm	1	To flap handle, All models
10	N006	Lock nut. M6	1	
11	FC-1	Rod-end. Female M6	1	
12	B06525	Bolt 6 x 25	1	
13	W006	Washer M6	2	Only needed to take up play

Flap mixer assembly

BUSHBABY / EXPLORER / SAFARI PARTS CATALOGUE

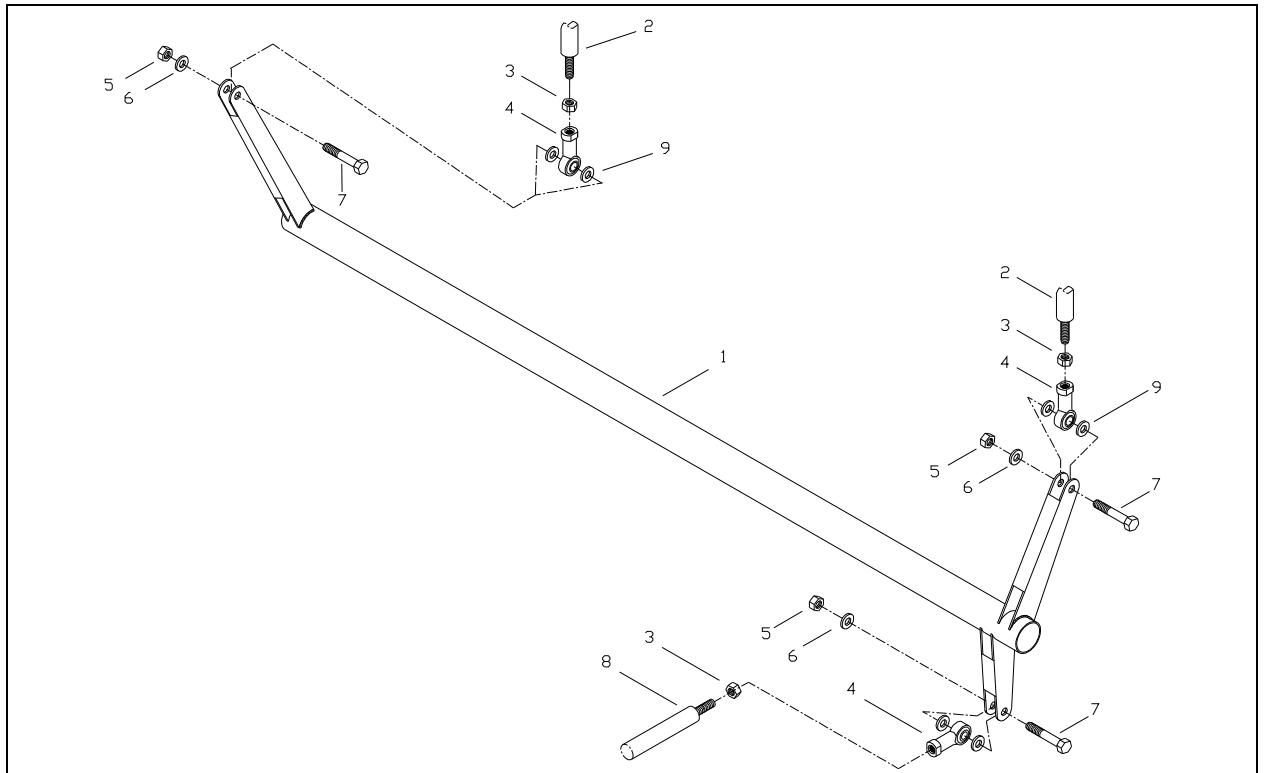


Fig Ref No:	Part Number	Part description	Qty Per assembly	Notes
1	FBM-B	Mixer, aileron	1	
2	FCT-4A	Push-pull tube LHS=470mm. RHS470mm	2	Bushbaby
	FCT-4B	Push-pull tube. LHS=505mm, RHS=475	2	Explorer
	FCT-4C	Push-pull tube. LHS=510mm, RHS=495	2	Safari
3	N006	Lock nut. M6	3	
4	FC-1	Rod –end bearing. M6 female	3	
5	NY006	Nylock M6	3	
6	W006	Washer M6.	3	
7	B0625	Bolt 6 x 25	3	
8	FCT-2A	Push-pull tube. Aileron control. 780mm	1	To FBC-1 Bushbaby, Explorer
	FCT-2B	Push-pull tube. Aileron control. S-shape. 830mm		Safari
9	W006	Washer M6	6	Used only if spacer needed.

Aileron mixer assembly

BUSHBABY / EXPLORER / SAFARI PARTS CATALOGUE

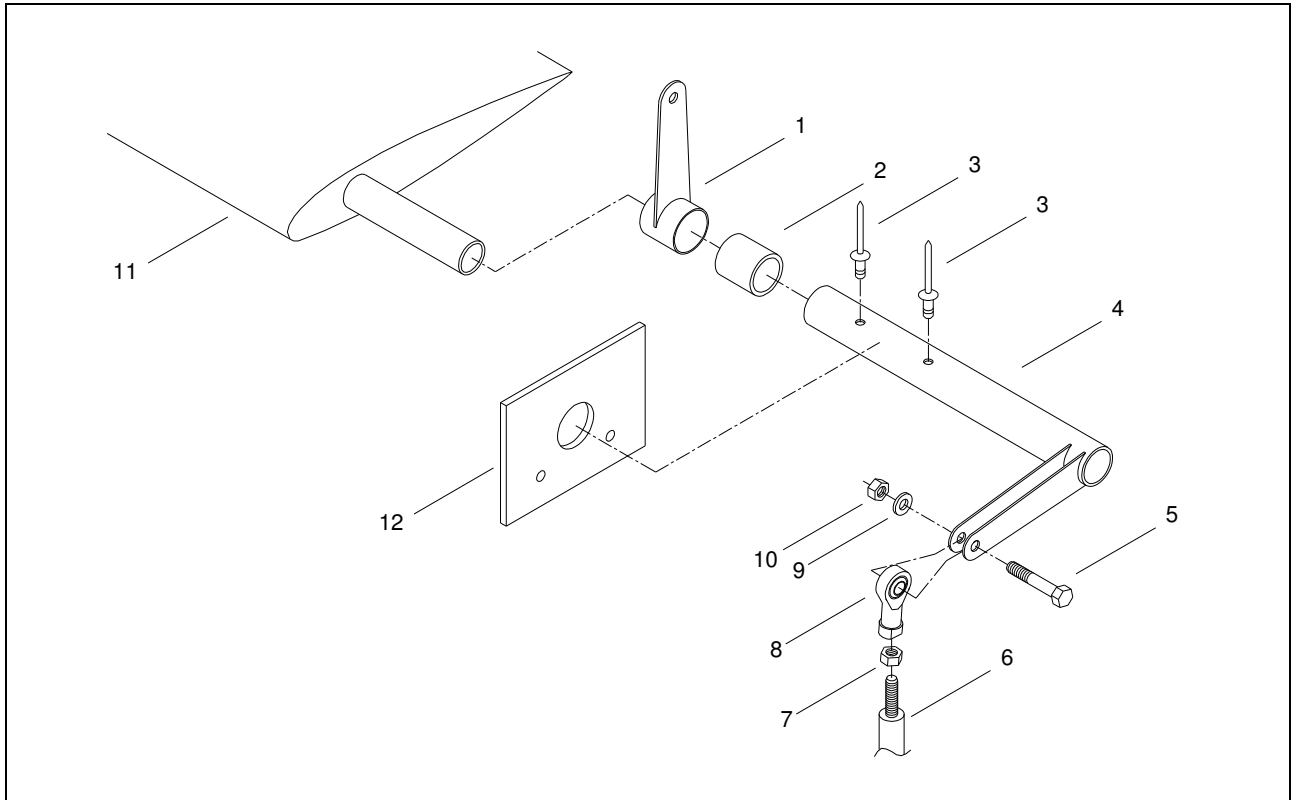


Fig Ref No:	Part Number	Part description	Qty Per assembly	Notes
1	WFL-5	Flapperon hanger	1	
2	WFL-7	Nylon bearing, flapperon hanger	1	
3	SS4808	Rivet steel, 4.8 x 8mm	4	Rivets can be replaced with 2 x M6 x 25mm bolts (8.8 grade)
4	WFL-2	Control horn, flapperon	1	
5	B0625	Bolt 6 x 25	1	
6	FCT-4A	Push-pull tube. LHS=470mm. RHS=470mm	2	Bushbaby
	FCT-4B	Push-pull tube. LHS=505mm, RHS=475	2	Explorer
	FCT-4C	Push-pull tube. LHS=510mm, RHS=495	2	Safari
7	N006	Lock nut, 6mm	1	
8	FC-1	Rod-end bearing, 6mm female	1	To FBM-B mixer
9	W006	Washer 6mm	1	
10	WI006	Wing nut, 6mm	1	
11	WFL-1	flapperon	1	Right hand shown
12	WFL-8	Bearing, 4mm nylon sheet	1	

Flapperon control horn assembly, right hand side shown

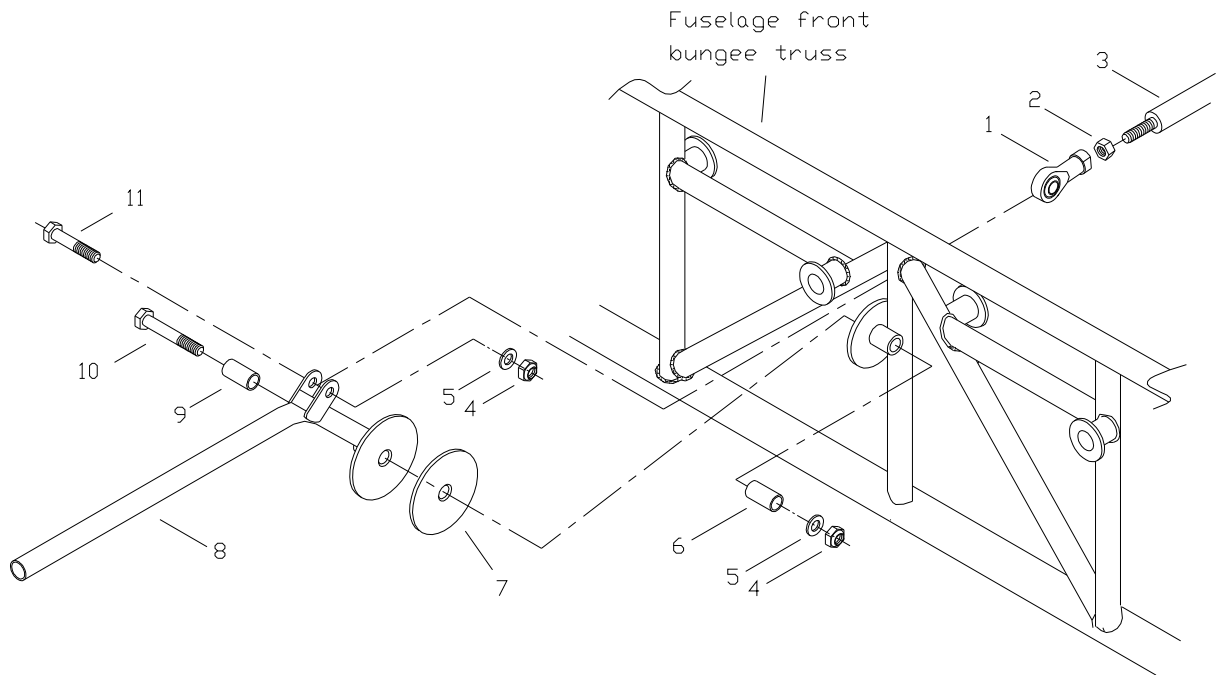


Fig Ref No:	Part Number	Part description	Qty Per assembly	Notes
1	FC-1	Rod-end bearing. Female	1	
2	N006	Nut M6	1	
3	FCT-6	Push-pull tub.	1	
4	NY006	Nylock M6	2	
5	W006	Washer M6	2	
6	FBR-4	Nylon tube ø8 x 1mm.	1	
7	LE040	Leather washer 40mm	1	
8	FLP	Flap handle	1	
9	FBR-4	Nylon tube ø8 x 1mm.	1	
10	B0650	Bolt 6 x 50	1	
11	B0625	Bolt 6 x 25	1	

Flap handle assembly

BUSHBABY / EXPLORER / SAFARI PARTS CATALOGUE

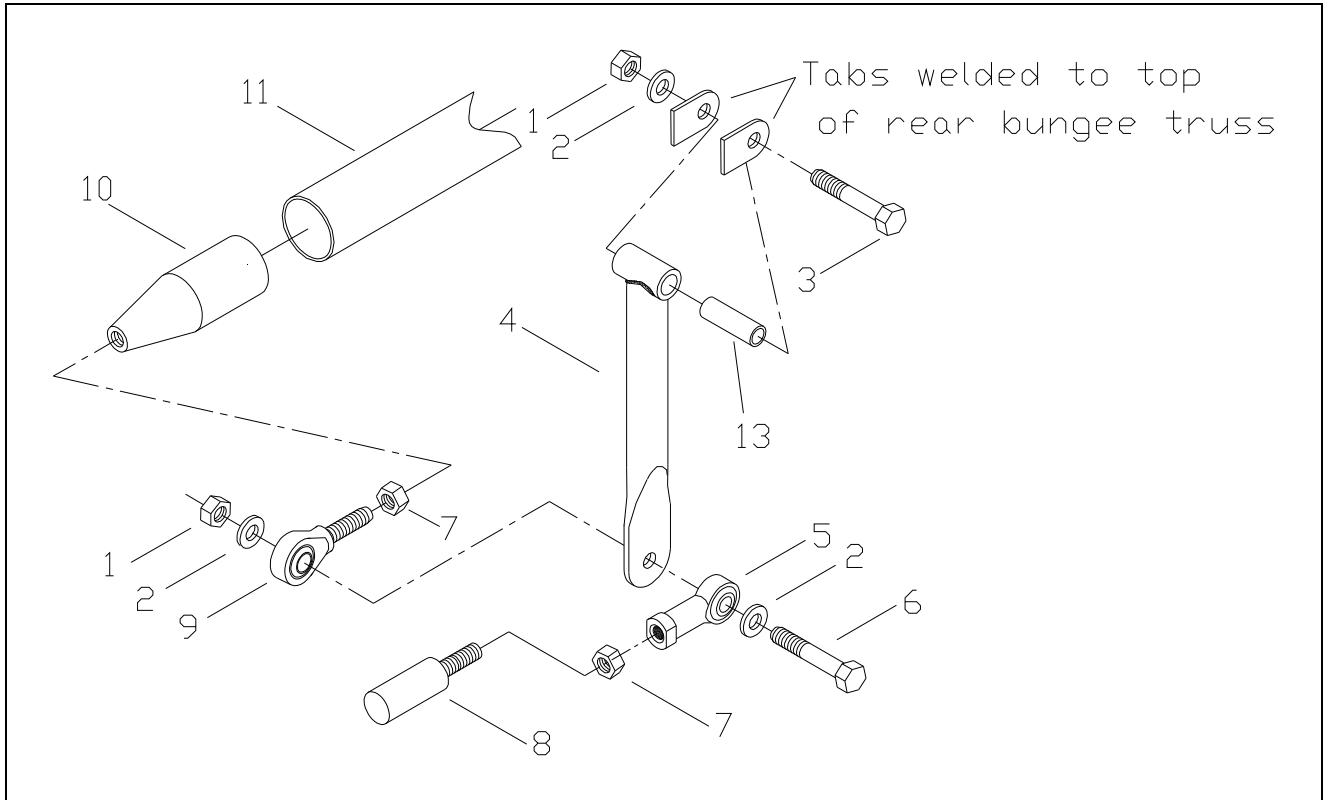


Fig Ref No:	Part Number	Part description	Qty Per assembly	Notes
1	NY006	Nylock M6	2	
2	W006	Washer M6	2	
3	B0635	Bolt 6 x 35	1	
4	FBC-3	Idler arm, elevator.	1	
5	FC-1	Rod-end bearing. Female M6	1	
6	B0635	Bolt 6 x 35.	1	
7	N006	Nut M6	2	
8	FCT-6	Push-pull tube. Elevator front 650mm	1	
9	FC-2	Rod-end bearing. Male.		
10	FCT-8	End fitting. aluminium	1	See note next part list
11	FCT-7A	Push-pull tube. Ø 25 x 1.2 aluminium. 3050mm	1	Bushbaby and Explorer
	FCT-7B	Push-pull tube. Ø 25 x 1.2 aluminium. 3225mm	1	Safari

Idler arm- assembly

BUSHBABY / EXPLORER / SAFARI PARTS CATALOGUE

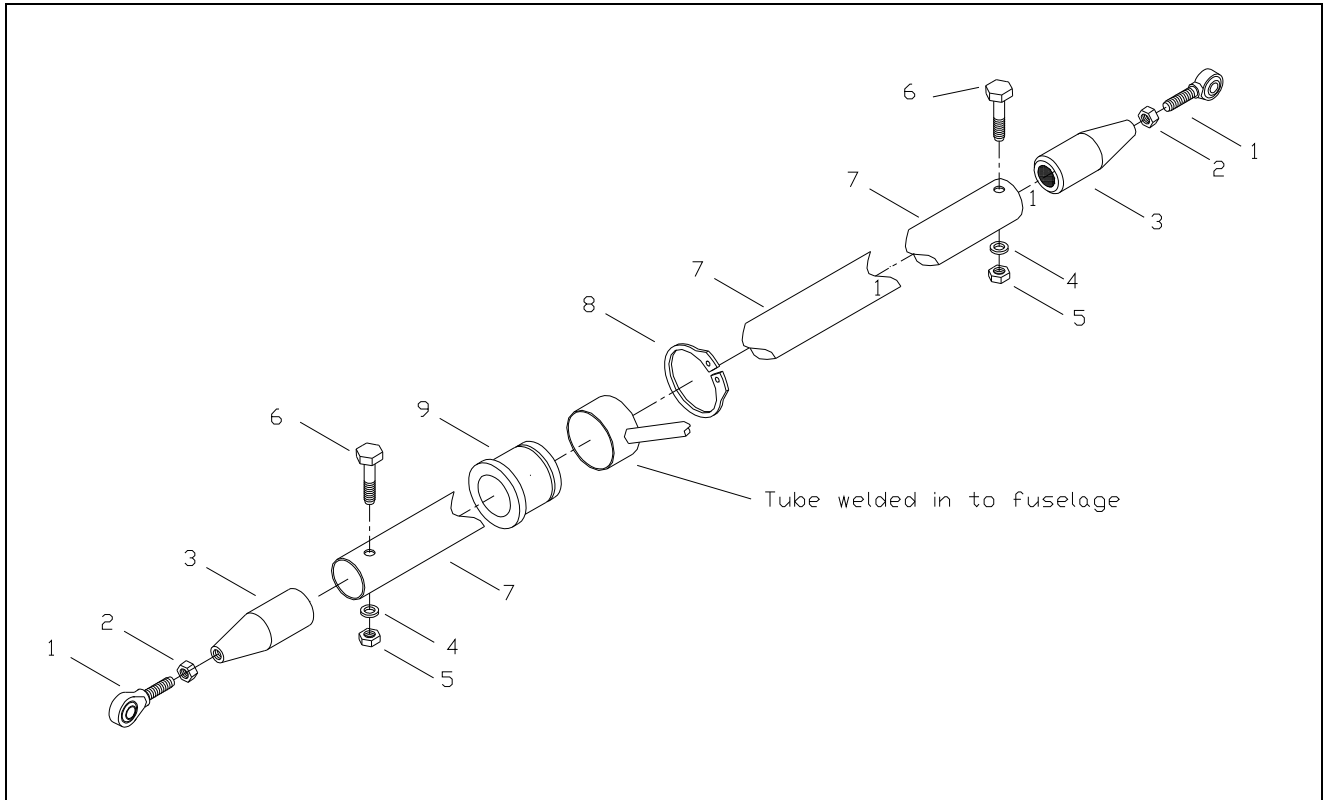


Fig Ref No:	Part Number	Part description	Qty Per assembly	Notes
1	FC-2	Rod-end bearing. Male.	2	
2	N006	Lock Nut M6	2	
3	FCT-8	End fitting. aluminium	2	Rod –end screwed in all the way.
4	W006	Washer M6	2	
5	NY006	Nylock M6	2	
6	B0640	Bolt 6 x 40	2	
7	FCT-7A	Push-pull tube. Ø 25 x 1.2 aluminium. 3050mm	1	Bushbaby and Explorer
	FCT-7B	Push-pull tube. Ø 25 x 1.2 aluminium. 3225mm	1	Safari
8	CI030	Circlip Ø 30	1	
9	FEV-1	Bushing Ø 32 x 30	1	

Elevator tube – assembly

BUSHBABY / EXPLORER / SAFARI PARTS CATALOGUE

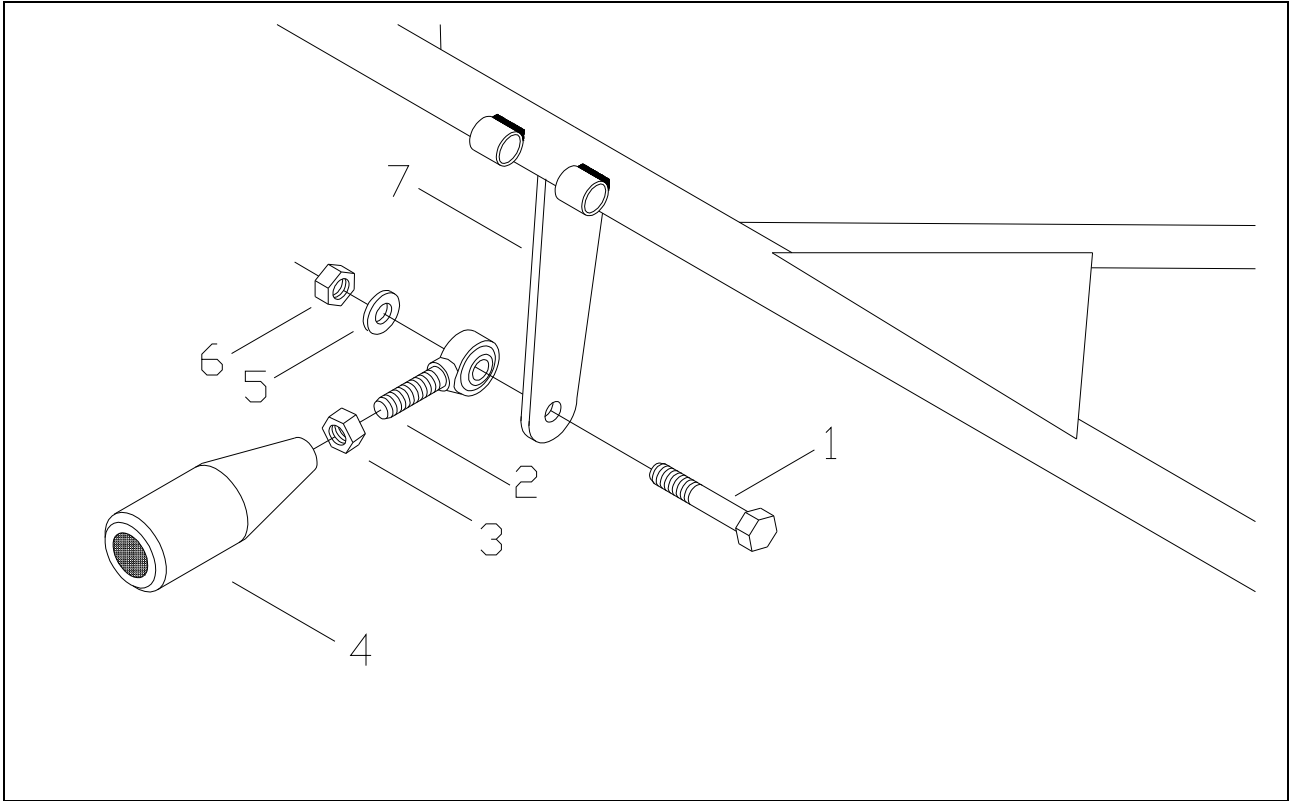


Fig Ref No:	Part Number	Part description	Qty Per assembly	Notes
1	B0625	Bolt 6 x 25	1	
2	FC-2	Rod-end male	1	
3	N006	Lock nut M6	1	
4	FCT-8	End fitting. Aluminium	1	
5	W006	Washer M6	1	
6	NY006	Nylock m6	1	
7	FEV-2A	Elevator	1	Horn shown, Bushbaby
	FEV-2B	Elevator, increased volume	1	Explorer and Safari

Elevator tube end –fitting – assembly

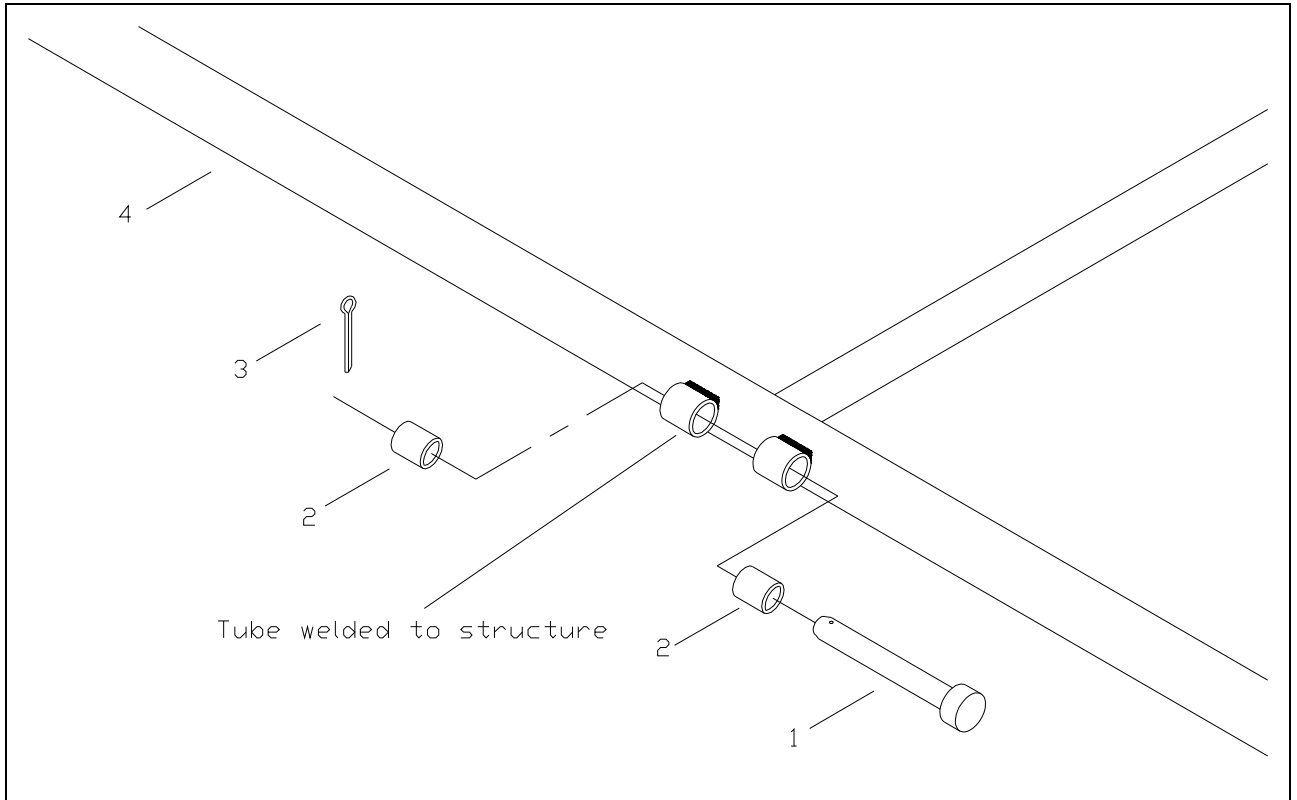


Fig Ref No:	Part Number	Part description	Qty Per assembly	Notes
1	CP0665	Clevis pin 6 x 65mm (hinge pin)	4	For elevator. Shown
1	CP0665	Clevis pin 6 x 65mm (hinge pin)	3	For rudder
2	FBR-4	Nylon tube Ø 8 x 1mm		Cut to length of welded tube
3	SP002	Split pin 2mm or 2.5mm	7	For all pins
4	FEV-2	elevator	1	Only section shown

Hinge pin – assembly

BUSHBABY / EXPLORER / SAFARI PARTS CATALOGUE

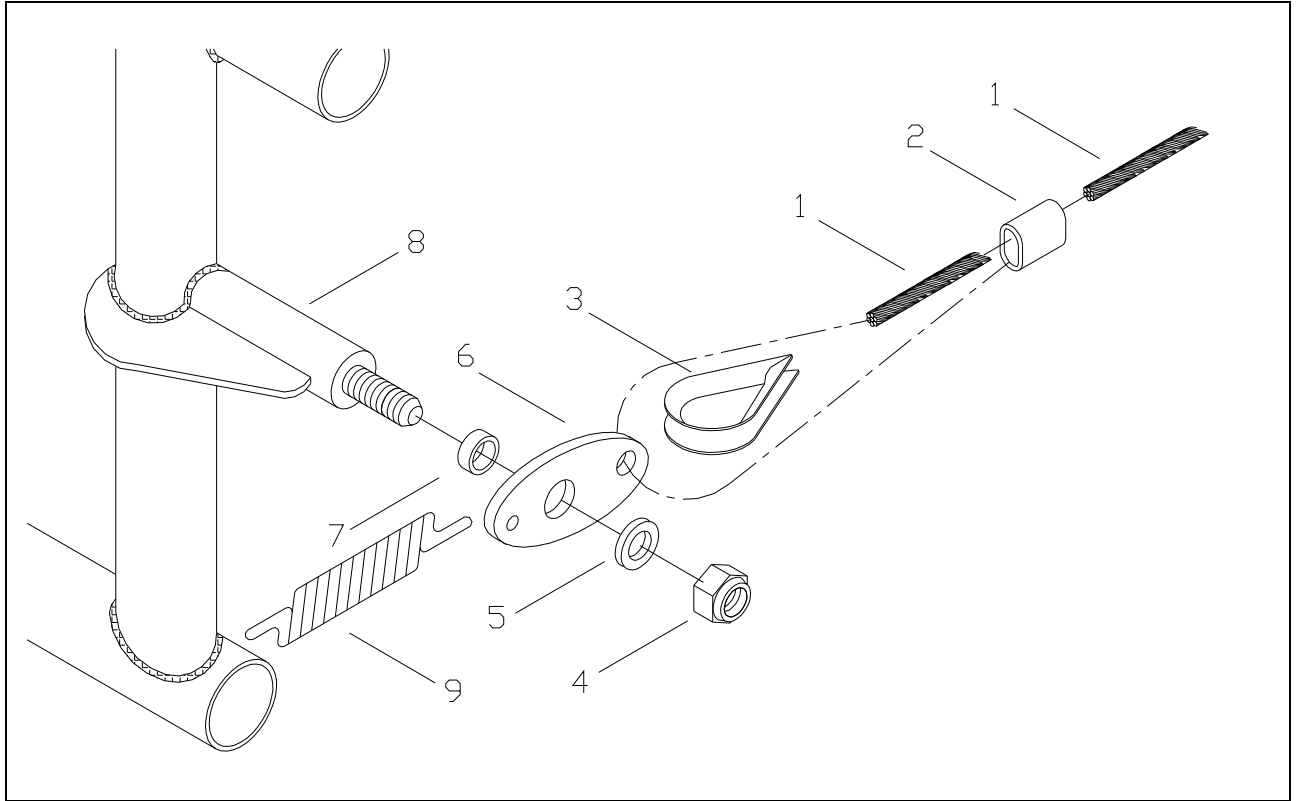


Fig Ref No:	Part Number	Part description	Qty Per assembly	Notes
1	FRP-3	Cable. SS Ø 3 x5000mm	2	
2	FRP-7	Nicropress 3mm	2	4 can also be used
3	FRP-8	Thimble. ss	2	
4	NY006	Nylock M6	2	
5	W006	Washer M6	4	
6	FRP-5	Rudder link plate	2	Laser cut
7	BB8003	Bronze bush Ø8 x3mm	2	
8	FRP-1A	Rudder pedal	2	Left shown, Bushbaby, Explorer
	FRP-1B	Rudder pedal	2	Safari
9	FRP-6	Spring, rudder return	2	
	FRP-9	Rudder cable pulleys, rear bungee truss under seat.	2	Safari only (Not shown)

QTY Parts for both pedals shown

Rudder cable, pedal – assembly

BUSHBABY / EXPLORER / SAFARI PARTS CATALOGUE

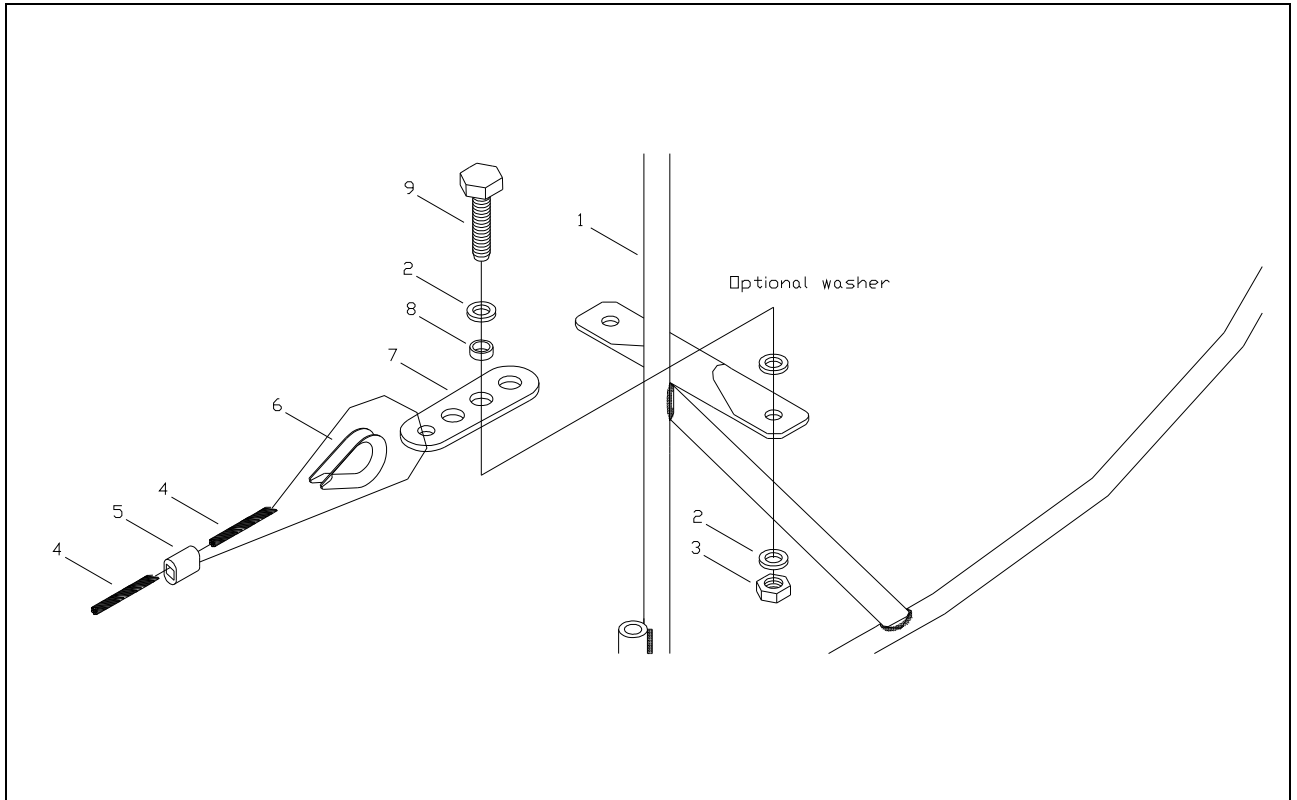


Fig Ref No:	Part Number	Part description	Qty Per assembly	Notes
1	FR-1A	Rudder weldment	1	Bushbaby, Explorer
	FR-1B	Rudder weldment	1	Safari
2	W006	Washer M6	2	
3	NY006	Nylock M6	2	
4	FRP-3	Cable. SS Ø 3 x5000mm	2	7 x 19
5	FRP-7	Nicropress 3mm	2	4 can also be used
6	FRP-8	Thimble. ss	2	
7	FRP-2	Rudder link plate, adjustable	2	Laser cut
8	BB8003	Bronze bush Ø8 x 3mm	3	
9	B0620	Bolt 6 x 20	2	

Rudder cable, rudder – assembly

BUSHBABY / EXPLORER / SAFARI PARTS CATALOGUE

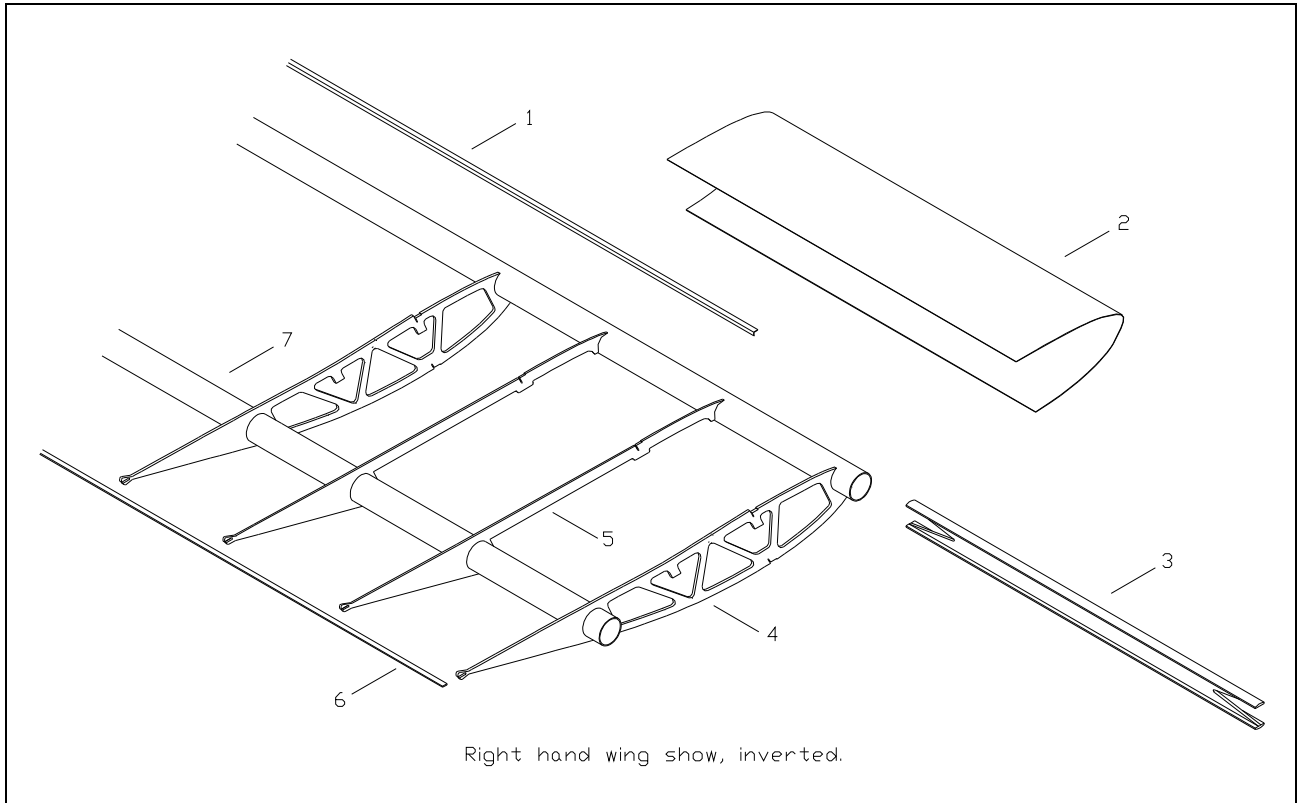


Fig Ref No:	Part Number	Part description	Qty Per wing	Notes
1	WST-1A	12mmx19mm x 3350, Aluminium angle – Top Rib support	1	
	WST-1B	12mmx19mm x 4000, Aluminium angle – Bottom rib support	1	
2	WLE-2B	Composite Leading edge cuff	4	
3	WSS-1A	Wooden I-Beam (WSS-1A & WCS-5)	2	Made from 6mm marine ply
4	WRB-1	6 mm rib, birch or marine ply	5	
	WRB-2	4mm rib, birch or marine ply	6	
5	WRB-4	4mm tank rib, birch or marine ply	2	
6	WTE	Flat bar, alluminium 12mm x 3mm x 4440mm	1	
7	WSP-1	Wing spar, 4050mm	2	

Bushbaby and Explorer wing assembly

BUSHBABY / EXPLORER / SAFARI PARTS CATALOGUE

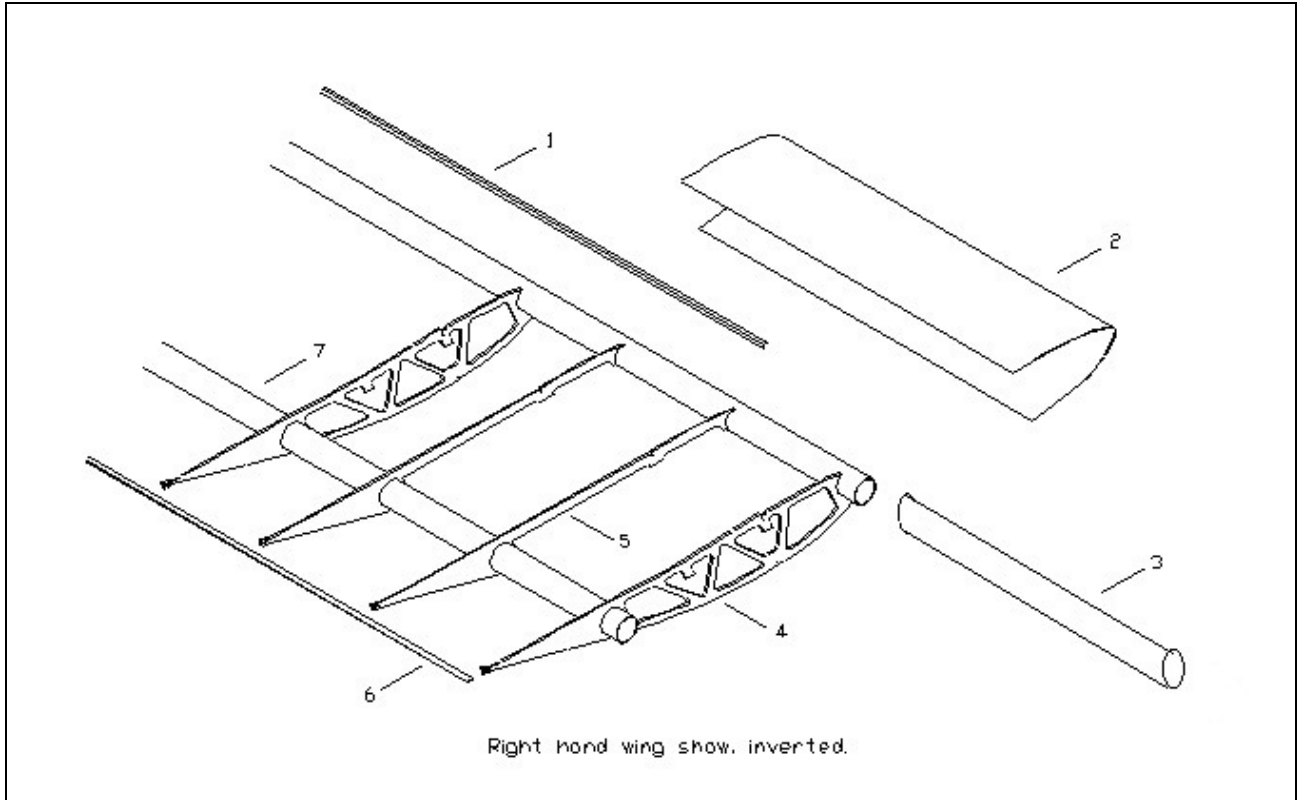


Fig Ref No:	Part Number	Part description	Qty Per wing	Notes
1	WST-1A	12mmx19mm x 3350, Aluminium angle – Top Rib support	1	
	WST-1B	12mmx19mm x 4000, Aluminium angle – Bottom rib support	1	
2	WLE-2B	Composite Leading edge cuff	4	
3	WSS-1B	Aluminium doubler tube	2	Inserted in Spar at WKB attachment
4	WRB-1	6 mm rib, birch or marine ply	5	
	WRB-2	4mm rib, birch or marine ply	6	
5	WRB-4	4mm tank rib, birch or marine ply	2	
6	WTE	Flat bar, alluminium 12mm x 3mm x 4440mm	1	
7	WSP-1	Wing spar, 4050mm	2	
10				
11				
12				
13				

Safari wing assembly

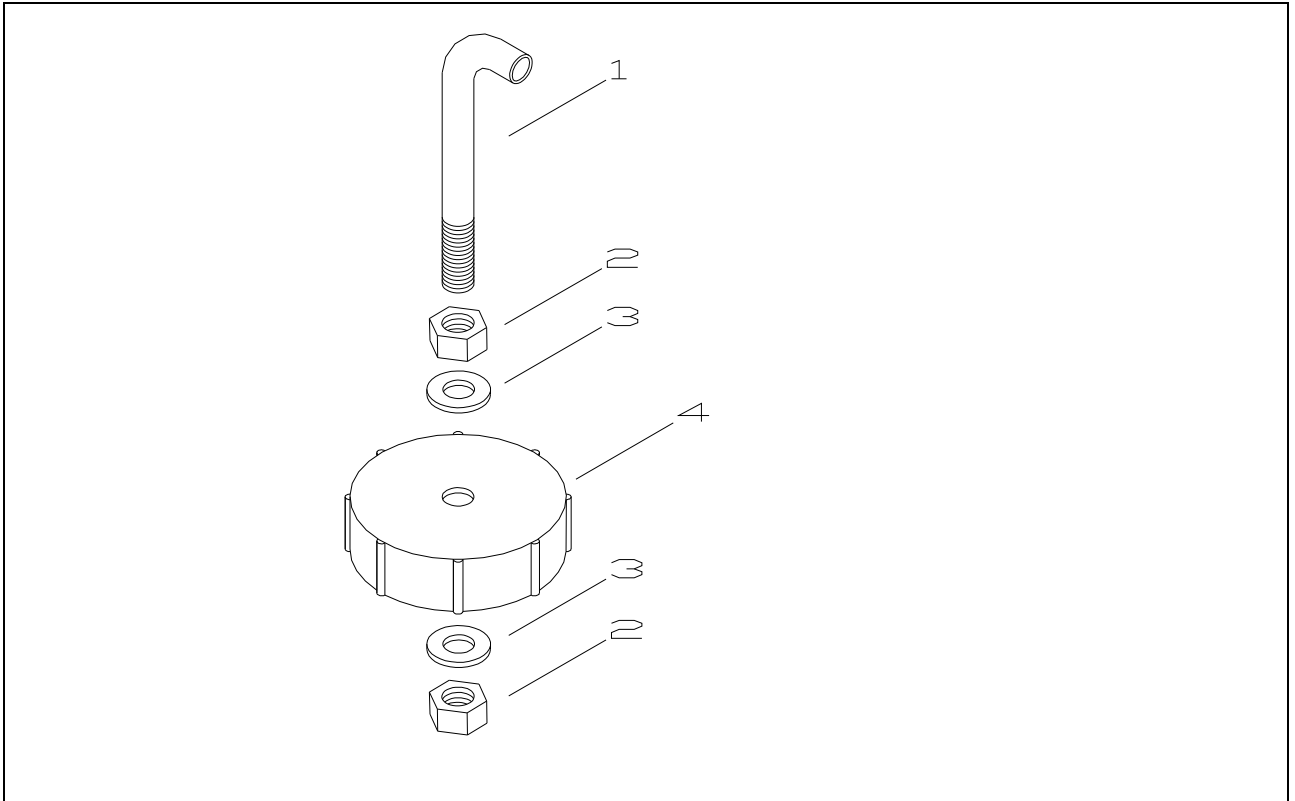


Fig Ref No:	Part Number	Part description	Qty Per assembly	Notes
1		Vent, fuel tank	1	Owner to thread
2	N010	Nut M10	2	
3	W010	Washer m10	2	
4		Cap, fuel tank	1	

BUSHBABY / EXPLORER / SAFARI PARTS CATALOGUE

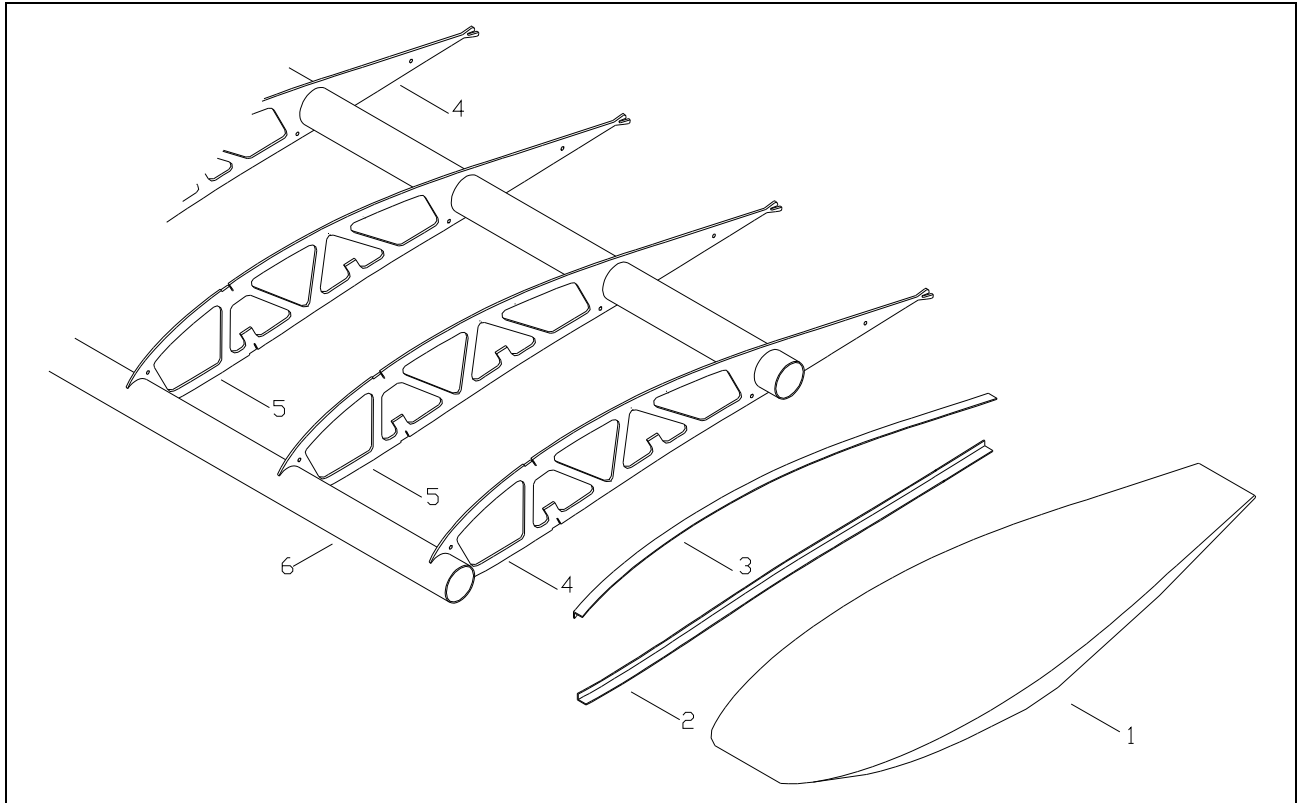


Fig Ref No:	Part Number	Part description	Qty Per wing	Notes
1	WT	Wing tip, left wing shown	1	
2	WE-1	Wing tip mount, 12mm x 19mm aluminium angle	1	
3	WE-1	Wing tip mount, 12mm x 19mm aluminium angle	1	
4	WRB-1	6 mm rib, birch or marine ply	5	
5	WRB-2	4mm rib, birch or marine ply	6	
6	WSP-1	Wing spar, 4050mm	2	

Wing tip assembly – Bushbaby, Explorer, Safari

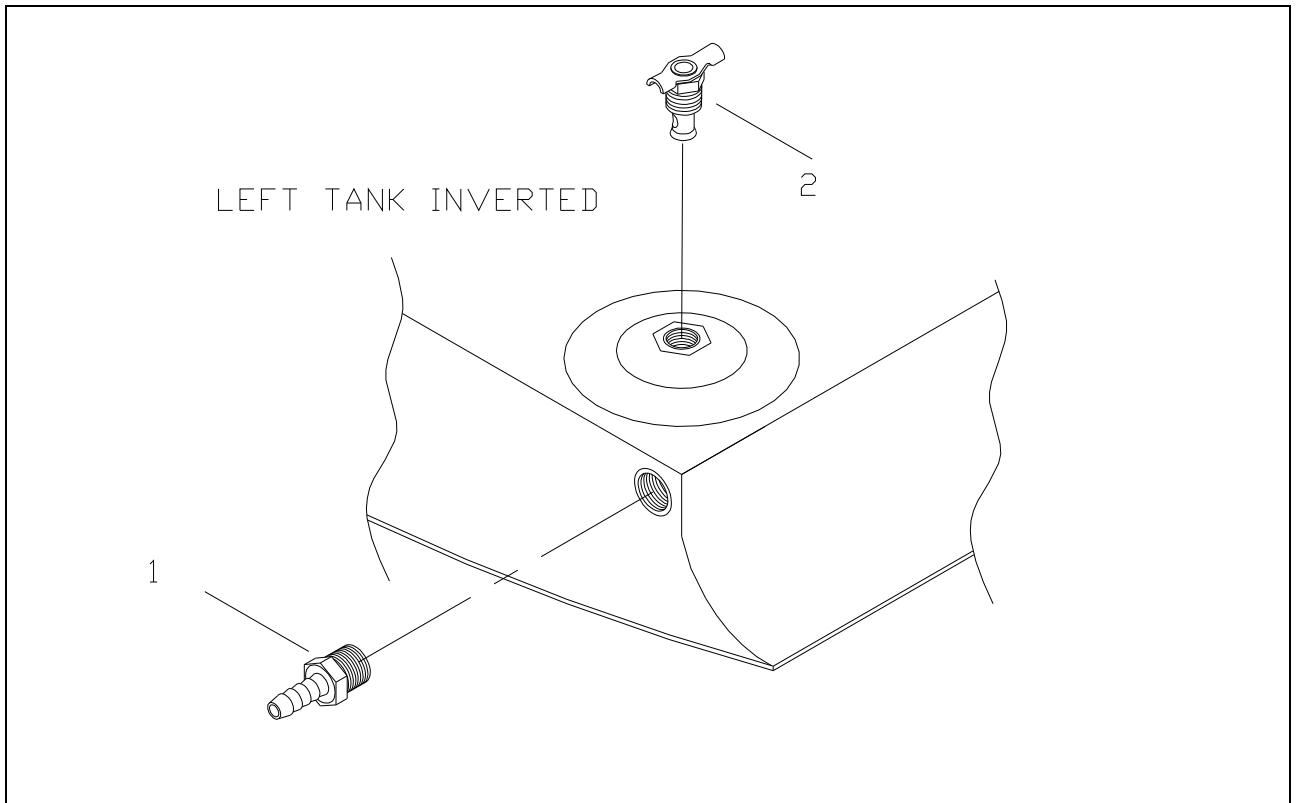


Fig Ref No:	Part Number	Part description	Qty Per assembly	Notes
1	WT-3	Hose barb, fuel tank outlet	1	
2	WT-4	Water drain tap	1	

Tank outlet assembly

BUSHBABY / EXPLORER / SAFARI PARTS CATALOGUE

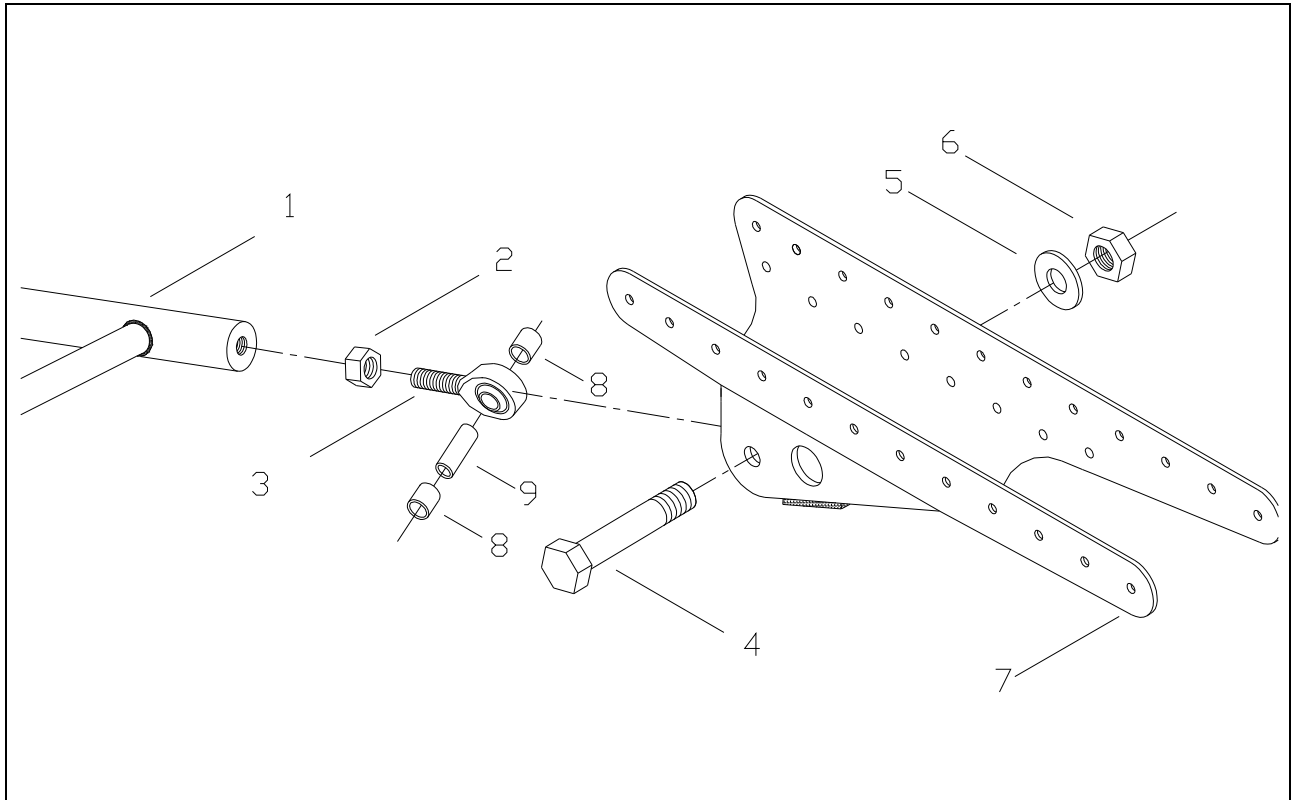


Fig Ref No:	Part Number	Part description	Qty Per assembly	Notes
1	WLS-AL	Lift strut	1	Bushbaby, Explorer
	WLS-AR	Lift strut	1	Bushbaby, Explorer
	WLS-BL	Lift strut	1	Safari
	WLS-BR	Lift strut	1	Safari
2	N010W1	Split	2	
3	WLS-3	Rod end bearings, 10mm mail	2	
4	B0865W2	8mm Bolt, Lift strut / WBK	2	
5	W008	8mm washer	2	
6	NY008	8mm nylock nuts	2	
7	WBK	Bracket, spar to lift strut	2	
8	WLS-2	Spacers, Ø12mm x 50mm	4	Cut to size
9	WLS-1	Bushes Ø10mm x 32mm	2	

Lift strut bracket assembly

BUSHBABY / EXPLORER / SAFARI PARTS CATALOGUE

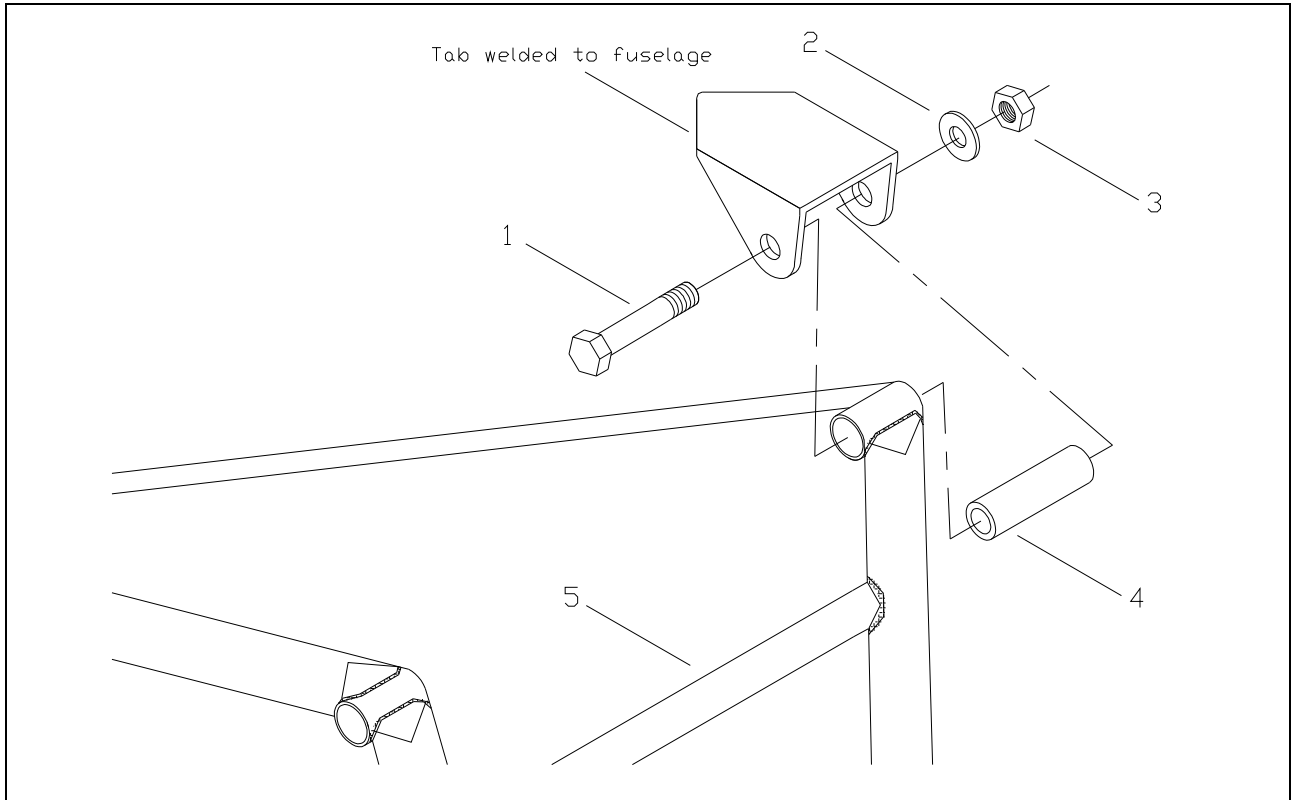


Fig Ref No:	Part Number	Part description	Qty Per assembly	Notes
1	B0870	Bolt 8 x 70	2	
2	W008	Washer M8	2	
3	NY008	Nylock M8	2	
4	BB1240	Bronze bush \varnothing 12 x 40mm	2	
5	LML-1L	Landing gear leg. T/d left	1	Left hand shown

Main leg assembly at fuselage- All models

BUSHBABY / EXPLORER / SAFARI PARTS CATALOGUE

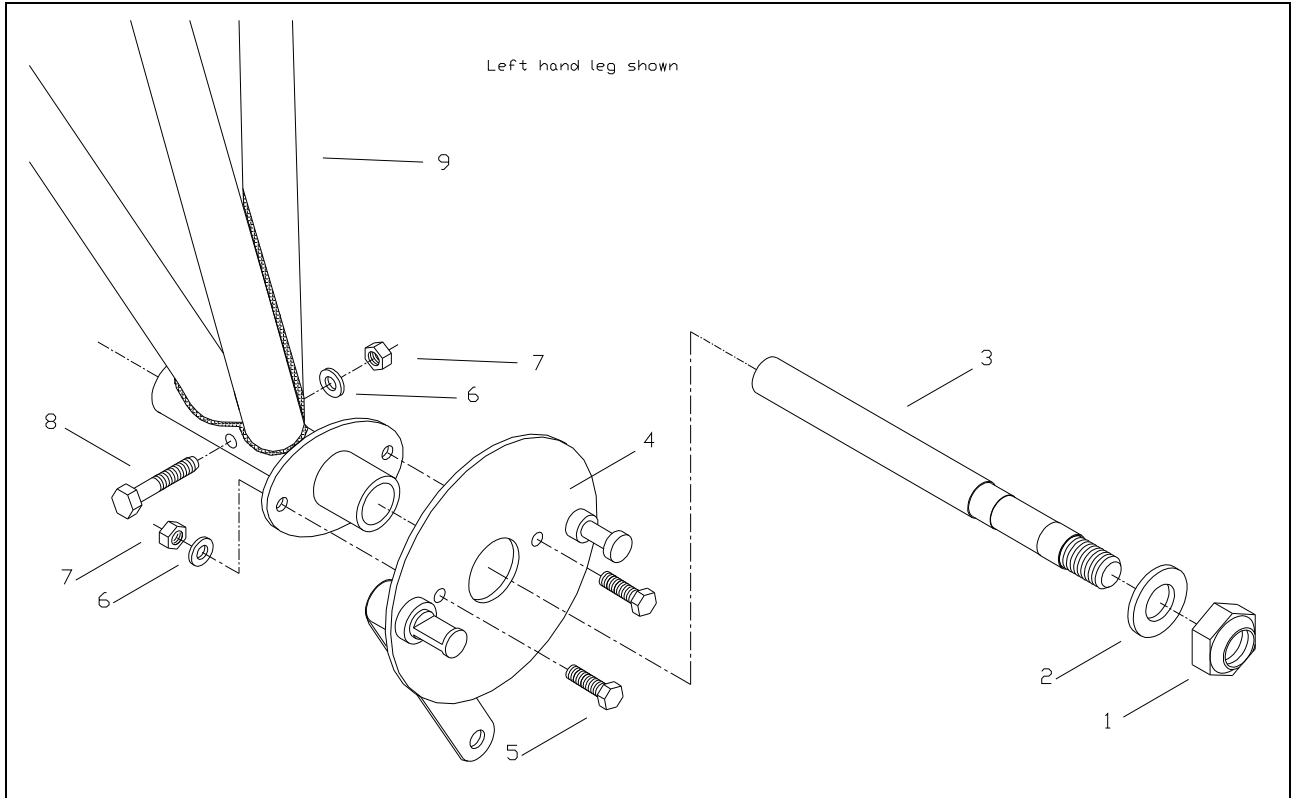


Fig Ref No:	Part Number	Part description	Qty Per assembly	Notes
1	NY012	Nylock m12	1	
2	W012	Washer M12	1	
3	LMG-8	Axle	1	
4	LB-2L	Brake backing plate. left	1	
5	B0620	Bolt 6 x 20	2	
6	W006	Washer M6	3	
7	NY006	Nylock M6	3	
8	B0645	Bolt 6 x65	1	
9	LML-1L	Landing gear leg. Tail dragger LH	1	

Main leg lower assembly, Bushbaby and Explorer

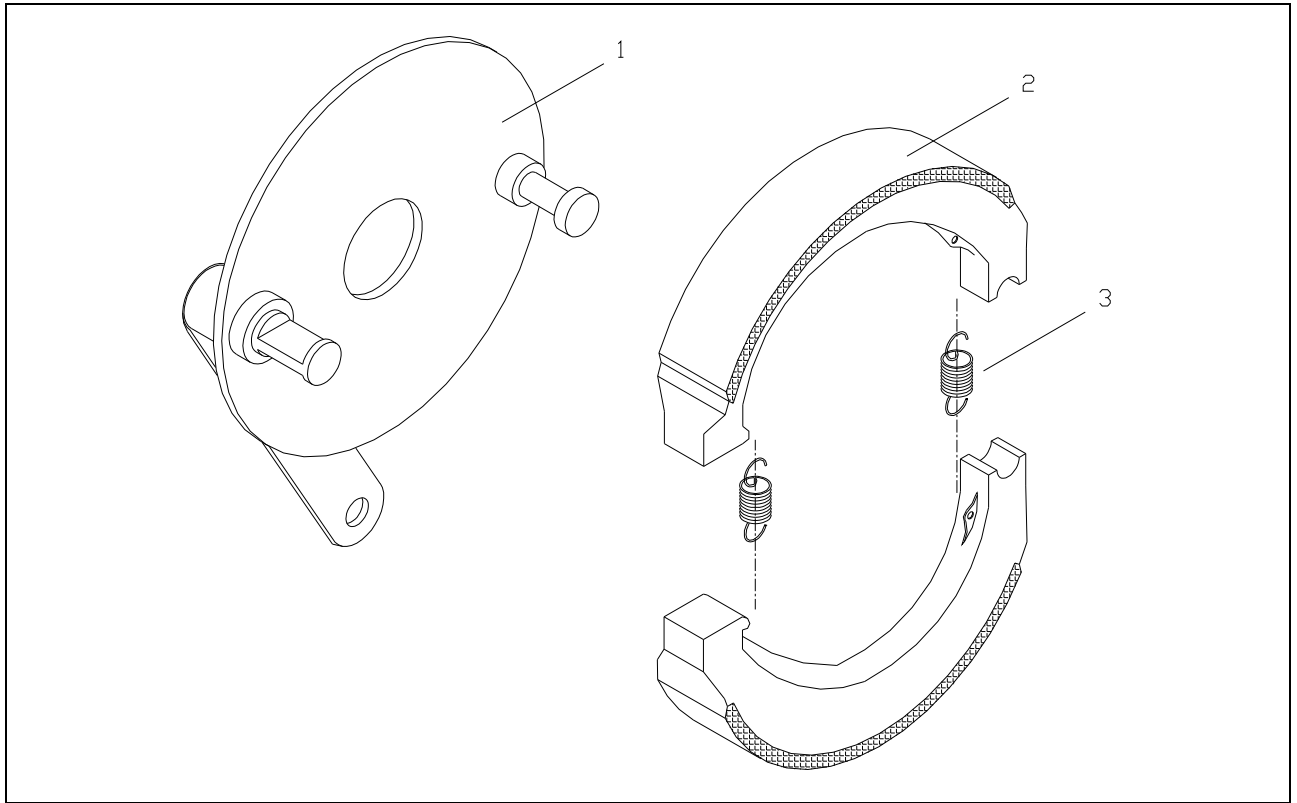


Fig Ref No:	Part Number	Part description	Qty Per assembly	Notes
1	LB-2L	Brake flange: left Hand	2	
2	LB-4	Brake shoes (set)	2	
3	LB-7	Spring, retain brake shoes	2	

Brake Shoe assembly, Bushbaby and Explorer

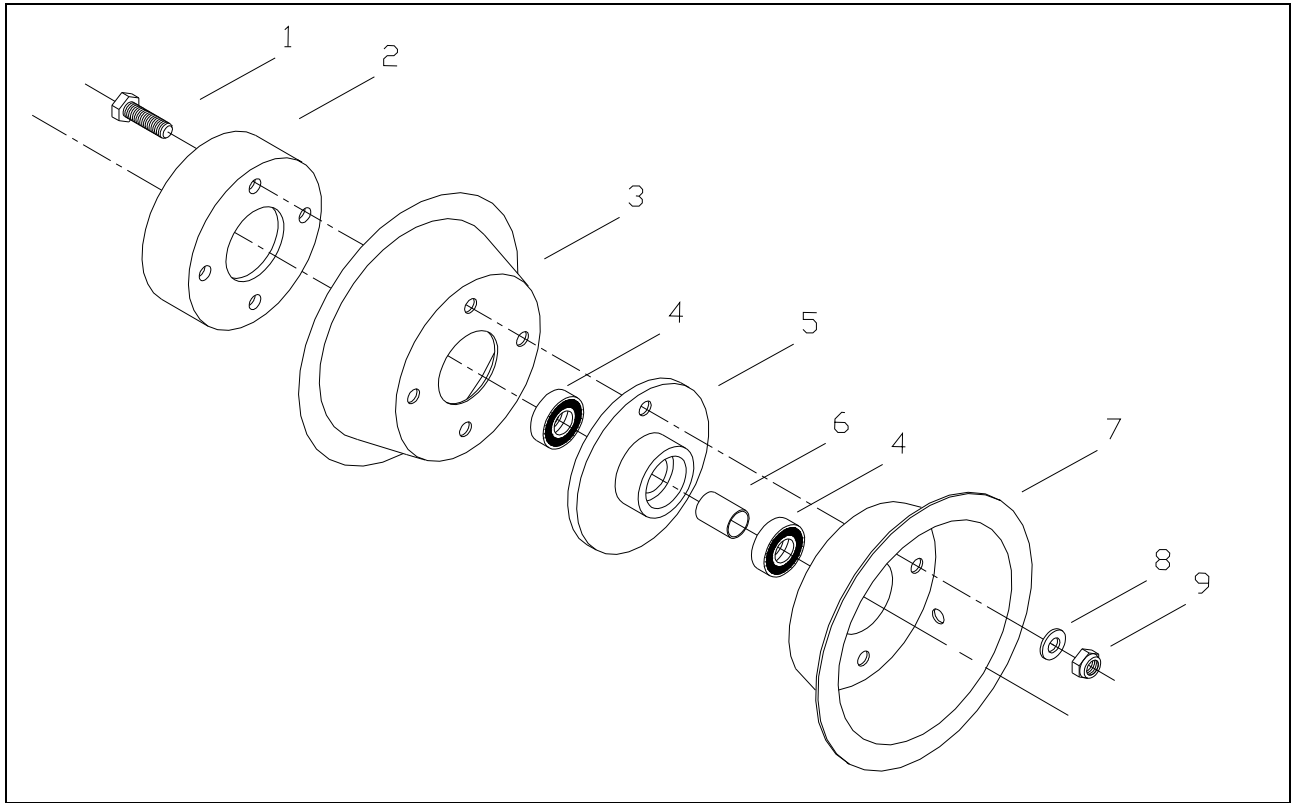


Fig Ref No:	Part Number	Part description	Qty Per assembly	Notes
1	B1O35M1	Bolt 10 x 35; rim, hub, brake drum	4	
2	LB-5	Brake drum	1	
3	LMW-5A	Rim 6", inner	1	
4	LMW-1	Bearing, 6205 DDU	2	
5	LMW-2	Hub, aluminium	1	
6	LMW-6	Spacer tube, ø 19 aluminium	1	
7	LMW-5B	Rim 6", outer. With valve hole	1	
8	W010	Washer M10	4	
9	NY010	Nylock M10	4	

Wheel assembly, Bushbaby and Explorer

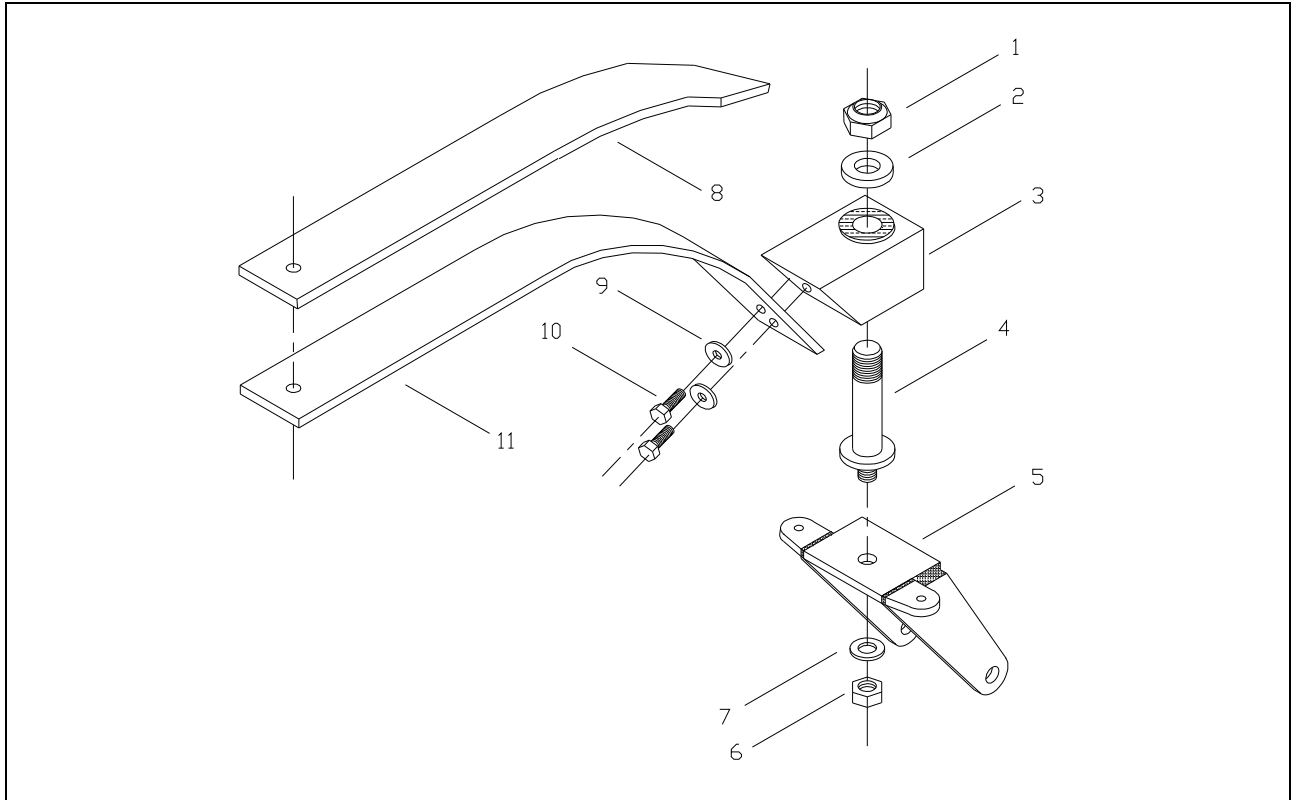


Fig Ref No:	Part Number	Part description	Qty Per assembly	Notes
1	NY016T1	Nylock M16	1	
2	W016	Washer M16	1	
3	LTB-1	Steering block with bronze bush	1	
4	LTB-4	Pivot shaft	1	
5	LTW-3	Fork, tail wheel	1	
6	NY010	Nylock M10	1	
7	W010	Washer M10	1	
8	LTW-1A	Doubler spring	1	
9	W008	Washer M8	2	
10	B0825T1	Bolt 8 x 25	2	
11	LTW-1	Leaf spring	1	

STEERING BLOCK ASSEMBLY

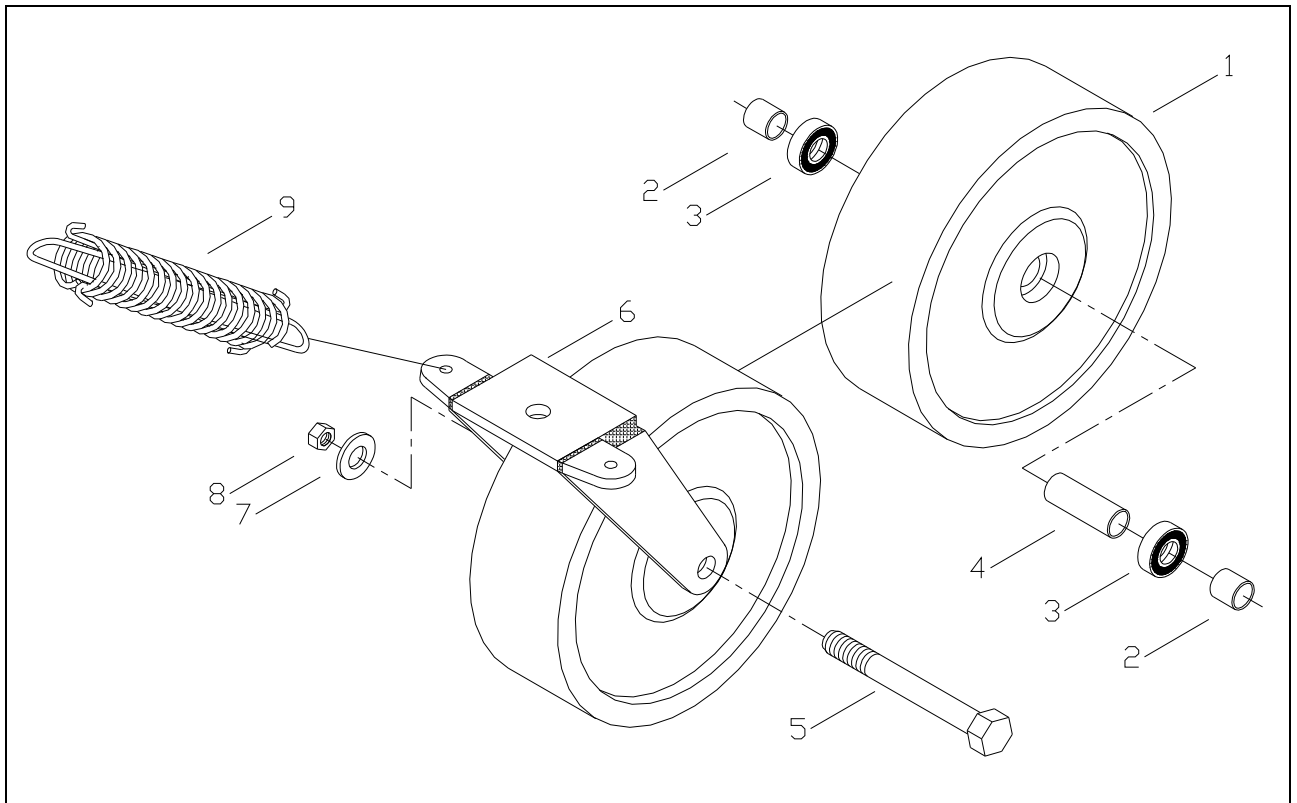


Fig Ref No:	Part Number	Part description	Qty Per assembly	Notes
1	LTW-4	Tail wheel \varnothing 150mm		
2	LTW-8	Steel spacer \varnothing 12.7mm.	2	Between fork & bearing
3	LTW-9	6002 bearing	2	
4	LTW-8A	Steel spacer. \varnothing 12.7mm	1	Between bearings
5	B1090	Bolt 10 x 90	1	
6	LTW-3	Fork, tail wheel	1	
7	W010	Washer M10	1	
8	NY010	Nylock M10	1	
9	LTW-5	Spring, compression	2	

TAIL WHEEL ASSEMBLY

BUSHBABY / EXPLORER / SAFARI PARTS CATALOGUE

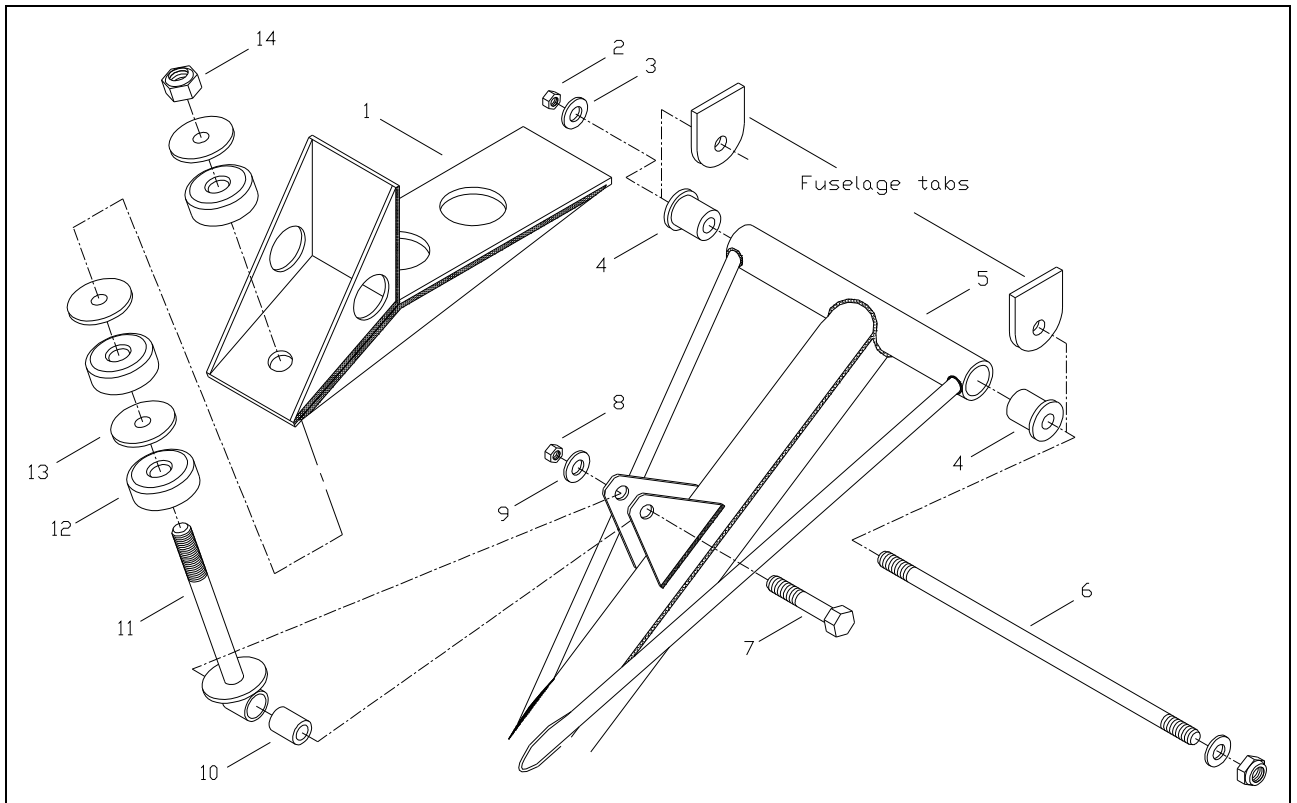


Fig Ref No:	Part Number	Part description	Qty Per assembly	Notes
1	LNW-13	Suspension bracket	1	
2	NY010	Nylock 10mm	2	
3	W010	Washer 10mm	2	
4	LNW-16	Nylon bush	2	
5	LNW-5	Shock strut	1	
6	LNW-18	Pivot rod. Ø 10mm	1	
7	B1050	Bolt 10 x 50	1	
8	NY010	Nylock M10	1	
9	W010	Washer M10	1	
10	BB1620	Bronze bush ø 16 x 20mm	1	
11	LNW-7A	Guide	1	
12	LNW-14	Compression rubbers	4-6	Same as EM-5
13	FW012	Fender washer M12 x 40 x 3mm	4-6	
14	NY012	Nylock M12	1	

NOSE GEAR ASSEMBLY, upper

BUSHBABY / EXPLORER / SAFARI PARTS CATALOGUE

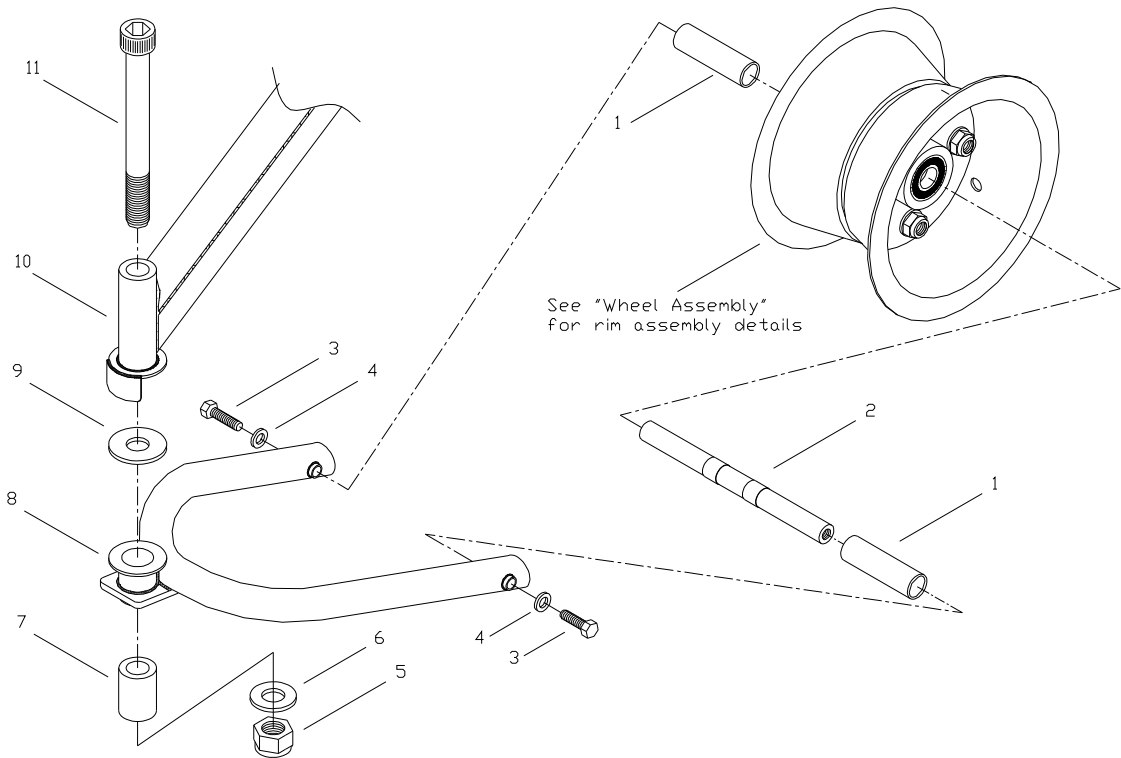


Fig Ref No:	Part Number	Part description	Qty Per assembly	Notes
1	LNW-10	Spacer tube.	2	Between rim & bearing
2	LNW-9	Axle, nose wheel	1	
3	B0825	Bolt 8 x 25	2	
4	W008	Washer M8	2	
5	NY016	Nylock M12	1	
6	W012	Washer M12	1	
7	BB2144	Bronze bush	1	
8	LNW-2	Fork weldment, nose gear	1	
9		Bronze washer	1	Part of BB2144
10	LNW-5	Shock strut	1	
11	C16150	Cap screw M16 x 150	1	

NOSE GEAR ASSEMBLY, lower

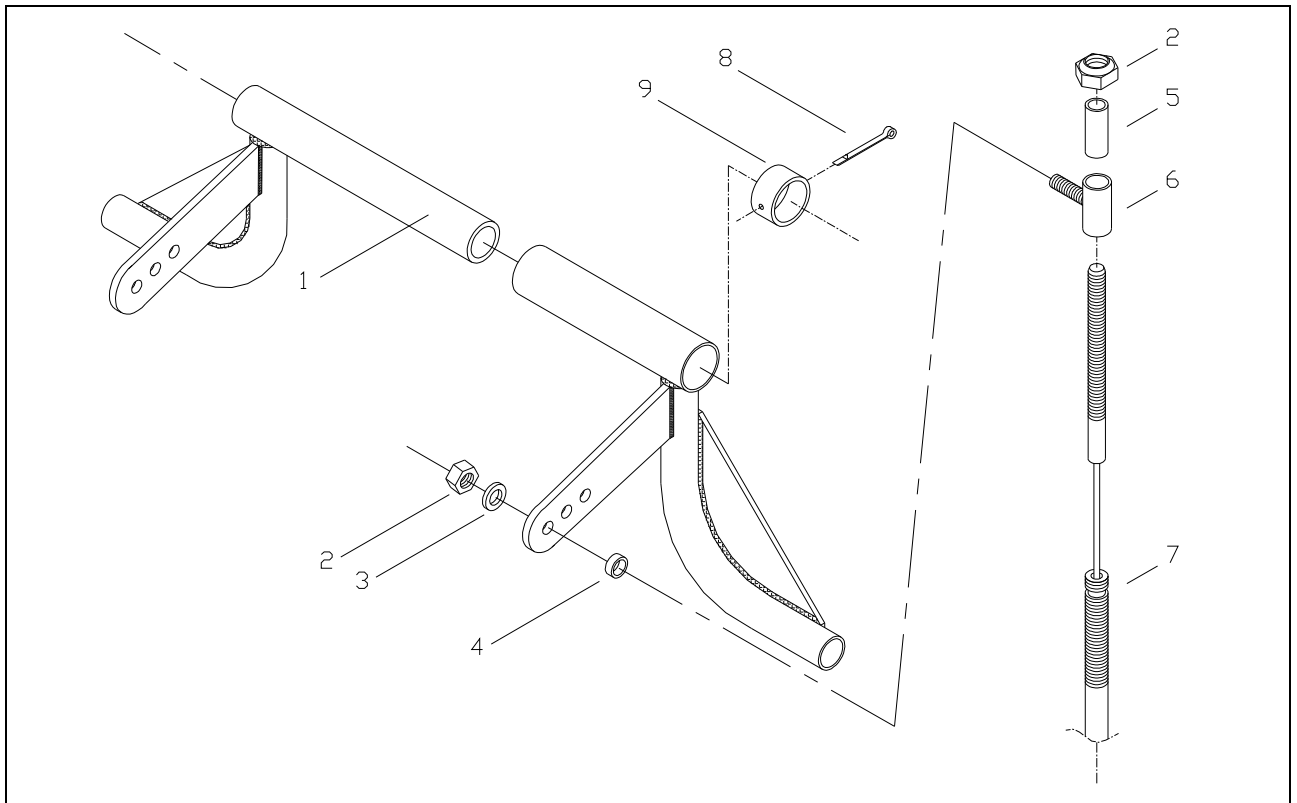


Fig Ref No:	Part Number	Part description	Qty Per assembly	Notes
1	LB-1	Brake pedal. Two part	1	
2	NY006	Nylock M6	4	
3	W006	Washer M6	4	
4	BB8003	Bronze bush \varnothing 8 x 3mm	2	
5		Nylon tube \varnothing 8 x 20mm	2	
6	LB-9	Pivot bolt	2	
7	LBL-6	Brake cable – left	1	
	LBL-6	Brake cable – left	1	NOT SHOWN
8	LB-8	Collar \varnothing 19 x 10mm	1	
9	SP002	Split pin	1	

BRAKE PEDAL ASSEMBLY

BUSHBABY / EXPLORER / SAFARI PARTS CATALOGUE

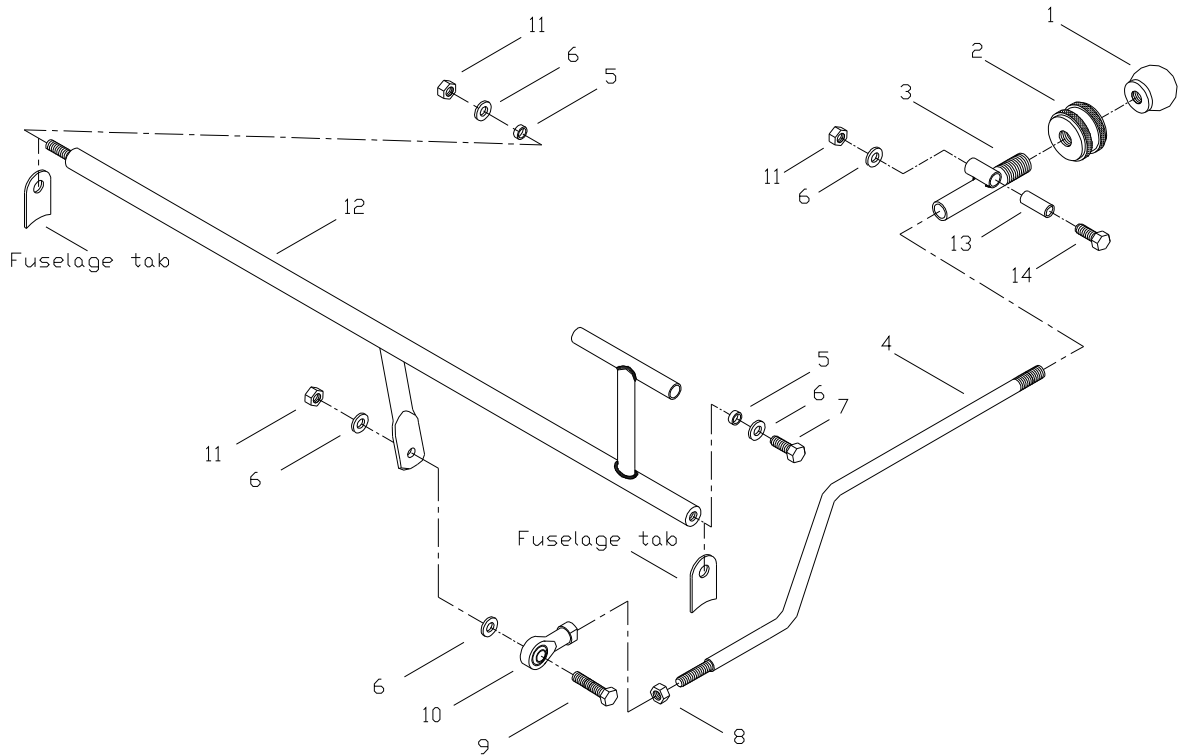


Fig Ref No:	Part Number	Part description	Qty Per assembly	Notes
1	ET-1E	Knob, throttle	1	
2	ET-1C	Friction nut	1	
3	ET-1A	Throttle body	1	
4	ET-1B	Throttle rod	1	
5	BB8003	Bronze bush. Ø 8 x 3mm	2	
6	W006	Washer M6	5	
7	B0620	Bolt 6 x 20	1	
8	N006	Nut, M6	1	
9	B0630	Bolt 6 x 30	1	
10	ET-9	Rod-end bearing. Female M6	1	
11	NY006	Nylock, M6	3	
12	ET-7B	Throttle bell crank, 582	1	912 = ET-7A
13	ET-6	Nylon bush. Ø 8 x 20mm		
14	B0635	Bolt 6 x 35	1	

THROTTLE ASSEMBLY

BUSHBABY / EXPLORER / SAFARI PARTS CATALOGUE

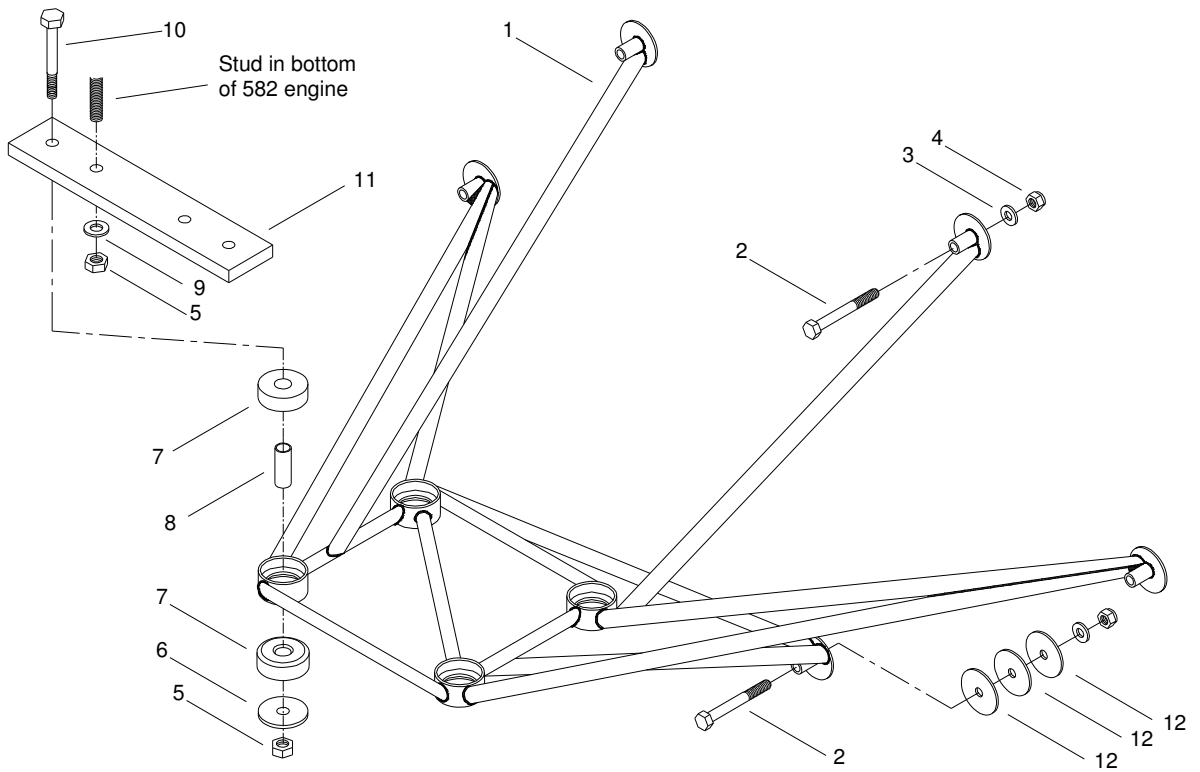


Fig Ref No:	Part Number	Part description	Qty Per assembly	Notes
1	EM-1-1	Engine mount weldment, 582/618	1	
2	B870	Bolt 8 x 70	5	
3	W008	Washer M8	5	
4	NY008	Nylock M8	5	
5	NY010	Nylock M10	8	
6	FW010E1	Fender washer. M10 x 40 x 3mm	4	
7	EM-5	Isolator rubbers	8	
8	EM-4	Spacer tube. Ø 14 x 35	4	
9	W010		4	
10	B1075	Bolt 10 x75	5	
11	EM-3	Aluminium bar 12 x 50 250mm	2	Mounts to 582 engine
12	Fw008	Fender washer M8 x 40 x 2	3	Tail dragger a/c only

BUSHBABY / EXPLORER / SAFARI PARTS CATALOGUE



Fig Ref No:	Part Number	Part description	Qty Per assembly	Notes

Flap mixer assembly

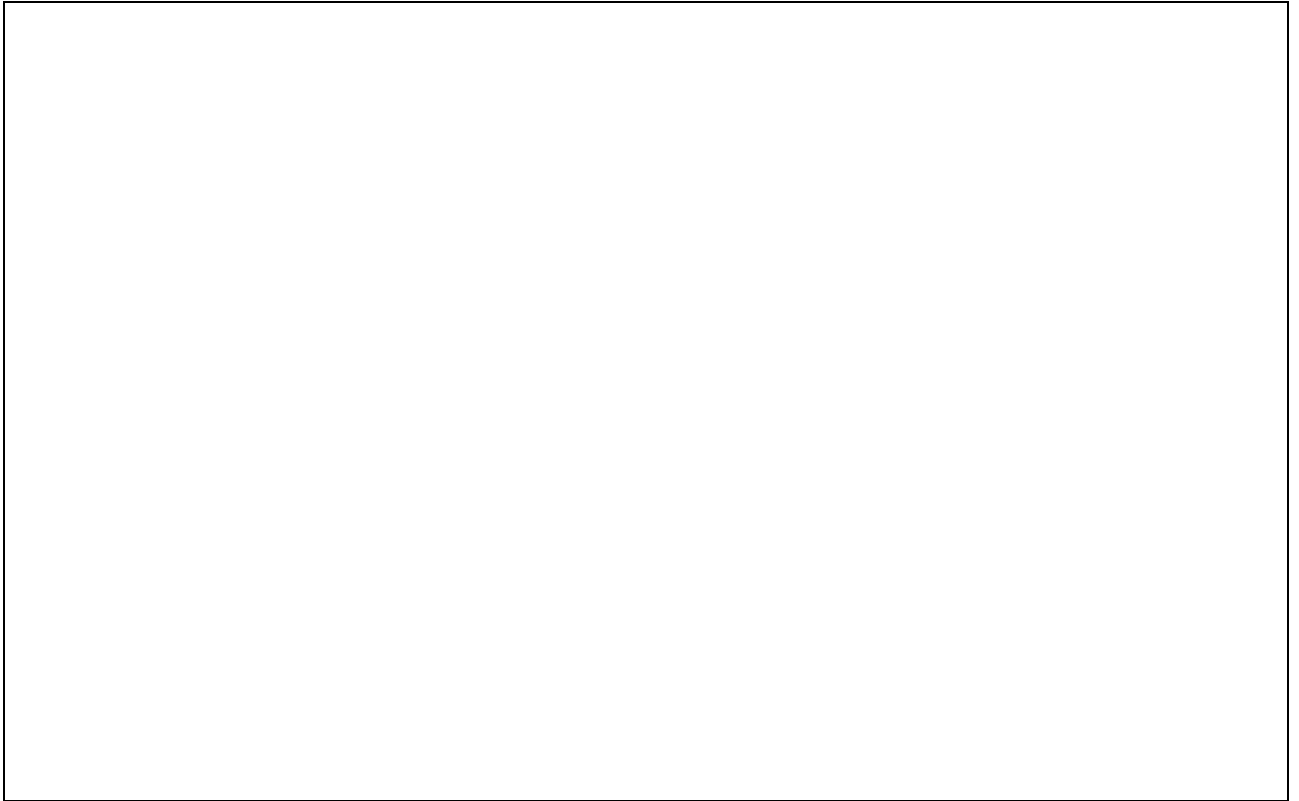


Fig Ref No:	Part Number	Part description	Qty Per assembly	Notes

Flap mixer assembly

SAFARI – PARTS AND COMPONENTS LIST

COVER & FINISH KIT 2010

PART NUMBER	QTY	PART DESCRIPTION
ALUMINIUM		
CD-1	2	DOOR BOTTOM SKIN. 0,9mm plate
CF-11	1	ANGLE, 19 x 12 x 700mm. Fire wall / floor
CF-12	1	ANGLE 19 x 12 x 1900mm. Fire wall edge
CF-13A	3	TUBE Ø12mm x 2.5m, STRINGER; fuselage side and belly
CF-3	1	ANGLE 50 x 25 x 870mm; Roof rear
CFT-2C	2	TURTLE DECK EXTENTION; 155 x 575 x 0,9mm
CFT-3	1	TURTLE DECK 1120 x 770 BB & EXPL
CI-5	1	ANGLE 12 x 19 x 105mm. Instrument panel / dash bracket (cut 7)
CR-1A	1	ROOF SHEET 998 x 800 x 0,9mm BB
CR-1B	1	ROOF SHEET 1050 X 800 X 0.9mm EXPL
CRB-3	1	SQUARE TUBE 12 x 12 x 1550mm. Roof centre rib & t-deck support
FABRIC COVERING SYSTEM		
CC-1A	2	SURFACE TAPE; 2" roll.
CC-4A	1	FABRIC 33m roll
CF-5A	3	FABRIC BOND 1 Litre
CF-6A	15	NITRATE 1 Litre
CF-6C	20	BUTYRATE CLEAR 1 Litre
CF-6W	5	BUTYRATE WHITE 1 Litre
CF-6AP	1	UV-PASTE 100gr
HARDWARE 1		
B0616C1	2	BOLT 6 x 16; seat belt / fuselage
B0630C1	2	BOLT 6 x 30; shoulder harness / fus tabs
B0630C2	1	BOLT 6 x 30; belt centre / fuselage
BU0416C1	12	BUTTON HEAD SCREW 4 x 16mm; instrument panel
BU0616C1	13	BUTTON HEAD SCREW 6 x 16mm; CF-21 / fuselage & fire wall
CS3208C1	16	C/SUNK RIVET 3.2 x 8; CI-5 / dash board
FW006C1	8	FENDER WASHER 6 x 19mm; seat belt anchors
FW006C2	13	FENDER WASHERS 6 x 19mm; BU0616C / CF-21
NY006	5	NYLOCKS 6mm. For 6mm bolts & other
NY008C1	4	NYLOCKS 8mm. CGS-2 / fuselage & door
RIV004C2	12	RIVNUT 4mm. Instrument panel / fuselage & dash board
RIV006C1	13	RIVNUT 6mm. Fire wall & fuselage tabs
W004	12	WASHER 4mm. For rivnut screws

BUSHBABY / EXPLORER / SAFARI PARTS CATALOGUE

W008C1 4 WASHER 8mm. For CGS-2

HARDWARE 2

AL3206C2	8	RIVET 3.2 x 6 AL;CF-1 / spar
AL3206C3	32	RIVET 3.2 x 6 AL; turtle deck extension / CFT-3
AL3206C4	8	RIVET 3.2 x 6 AL; CF-3 / fuselage
AL3206C5	110	RIVET 3.2 x 6 AL; door skin & window
AL3206C6	80	RIVET 3.2 x 6 AL; fire wall / edge angle
AL3206C8	8	RIVET 3.2 x 6 AL; fire wall / CF-11
AL3206C9	3	RIVET 3.2 x 6 AL; CRB-3 to fuselage
AL3206E1	12	RIVET 3.2 x 6 AL; EF-1 fuel tap brackets / fuselage tabs (32.x6=261)
AL3208C1	50	RIVET 3.2 x 8 AL; Roof to centre and butt rib.
AL3208C2	8	RIVET 3.2 x 8 AL; CF-11 lower angle / floor board.
AL3208C4	18	RIVET 3.2 x 8 AL; windscreen / roof
AL3208C6	14	RIVET 3.2 x 8 AL; stringer / fuselage
AL3208C7	16	RIVET 3.2 x 8 AL; DZS4 / Fuselage
AL3208C8	18	RIVET 3.2 x 8 AL; windscreen / fuselage (3.2x8=124)
BU0616	4	BUTTON HEAD SCREW 6x16mm Turtle Deck
RIV006	4	RIVNUT 6mm. Turtle Deck
RW32C3	18	RIVET WASHERS 3.2mm, windscreen support

OTHER ITEMS

CF-9A	1	FIREWALL S/STEEL. 825 x 675 x 0,9mm BB & EXPL
CI-2	1	INSTRUMENT PANEL, Aluminium
CGS-1	2	GAS LIFT STRUT, Door 4042 200N
CGS-2	4	BALL FITTING, gas lift
CS-3	2	SEATBELT & SHOULDER HARNESS
CS-5	1	NYLON TUBE Ø8 x 70mm (cut 8); CS-6 insert
CS-6	1	STEEL TUBE Ø10 x 70mm; Seat belt anchors (cut 8)
EF-2	2	FUEL COCK
EF-4	4	HOSE BARB, Ø8mm ID for fuel cock
MAN-C	1	MANUEL - COVER AND FINISH

PLASTIC AND FIBREGLASS

CD-3	2	DOOR WINDOW. 880 x 450 x 1.5mm BB
CD-3	2	DOOR WINDOW. 940 x 450 x 1.5mm EXPL
CF-1	1	ABS plastic sheet 1250 x 500mm; all fairings
CF-16	1	FOAM STRIP SPX 3 x 25 x 1700mm; fire wall edge
CF-17	1	RUBBER EDGE, 2500mm; Turtle deck
CF-19	1	FOAM STRIP. SPX33 25 x 3 x 3000mm; around CD-1
CF-21	1	BOOT-COWL; fibreglass
CF-22	1	FOAM STRIP SPX; CF-21 front edge, 25 x 3 x 2000mm
CF-23	1	RUBBER EDGE 1.2m; CF-21 edge / windshield 1.2m
CF-24	1	RUBBER EDGE, 865mm. Roof / windshield
CI-3	1	RUBBER EDGE; 1m. Dash front / wind screen
CS-2	1	SEAT
CW-1	1	RUBBER EDGE, 1000mm. Windshield sides
CW-3	1	NEO RUBBER; 25 x 1.6 x 850mm. Under windshield sides
CW-4	1	NEO RUBBER STRIPS; 25 x 1.6 x 2500mm. Roof ribs / roof
CW-5	1	WIND SHIELD; standard 1200 x 500 x 2mm

BUSHBABY / EXPLORER / SAFARI PARTS CATALOGUE

CW-6	2	REAR SIDE WINDOW 400 x 480 x 430 x 1.5mm
------	---	--

WOODEN PARTS

CI-2	1	DASHBOARD. 2mm poly carb (lexin)
------	---	----------------------------------

ENGINE KIT 2010 FOR ROTAX ENGINES 582 / 618

PART NUMBER	QTY	CHECKED	PART DESCRIPTION
-------------	-----	---------	------------------

ALUMINIUM PARTS

EM-3	2	ENGINE MOUNT; Aluminium Flat bar 12 x 50 x 250mm
ET-1C	1	FRICITION NUT; vernier throttle
ET-1E	1	KNOB; Vernier throttle.

ENGINE COWL & SPINNER

EC-1A	1	ENGINE COWL, Top
EC-1B	1	ENGINE COWL; Bottom
EC-2	2	PIANO HINGE; Engine cowl sides, 750mm
EC-3	2	WIRE STAINLESS; 1,5mm x 1m for piano hinge
EP-2	1	SPINNER
EP-3A	1	BACKPLATE, spinner

GENERAL PARTS & COMPONENTS

EF-3	1	T-PIECE; Ø8mm Fuel line
EM-4	4	SPACER; Ø14mm.EM-5 insert
ET-9	1	ROD END BEARING 6mm FEMALE, ET-8 Throttle push-pull
MAN-E	1	MANUAL - ENGINE KIT

HARDWARE 1

B0620E1	2	BOLT 6 x 20, Oil reservoir bottle / EH-1
B0620E2	1	BOLT 6 x 20; EB-5 / Solenoid / Fire wall
B0625E1	2	BOLT 6 x 25. Rectifier / fire wall
B0635E1	1	BOLT 6 x 35, Throttle / fuselage
B0870E1	5	BOLT 8 x 70mm; Engine mount / Fuselage
B1075E1	4	BOLT 10 x 75; Through bolt, Engine rubber isolator
BU0616E1	6	BUTTON HEAD SCREW 6 x 16mm. EC-1/CF-21
CLE008	5	CLEAVE LOCK NUT. For engine M8
CLE010	4	CLEAVE LOCK NUT. For M10 engine bolts.
CLE010	4	CLEAVE LOCK NUT. For M10 engine bolts.
FW006E1	6	FENDER WASHERS 6mm. Accessories / Fire wall
N006E1	1	NUT 6mm; lock nut / B0630E2
NY006E1	11	NYLOCK 6mm. For above bolts and rubber mounts.
NY006E2	1	NYLOCK 6mm. Bell crank ends.
RIV006E1	6	RIVNUT 6mm. Engine cowl/CF-21

BUSHBABY / EXPLORER / SAFARI PARTS CATALOGUE

W006	11	WASHER 6mm. For 6mm bolt & other.
HARDWARE 2		
AL3208E1	40	RIVET 3.2 x 8 AL; COUNTERSUNK, piano hinge / engine cowl
AL3208E2	14	RIVET 3.2 x 8 AL; COUNTERSUNK; Dzuss spring / cowl tabs
AL3208E5	8	RIVET 3.2 x 8 AL; EM-6A / Fire wall
B0616E5	1	BOLT 6 x 16: EF-7A & B / fuselage
BB8003E1	2	BRONZE BUSH Ø8 x 3mm. ET-7A & B / fuselage
BU0416E1	11	BUTTON HEAD SCREW 4 x 16; Spinner/backplate/cowl front
BU06	19	BUTTON HEAD SCREW 6mm, Engine cowl
RIV06	19	RIVNUT 6mm, Engine cowl
FW008E1	3	FENDER WASHERS 8mm; Engine mount lower tube / fire wall
FW010E1	4	FENDER WASHER 10 x 3mm; Engine isolator rubbers
N006E2	1	NUT 6mm LOCK NUT. Rod-end bearing / bell crank
RIV004E1	11	RIVNUT 4mm. Spinner/spinner backplate/cowl front
RW32E1	24	RIVET WASHER 3.2mm, rivet backing on fire wall
RW32E2	19	RIVET WASHER 3.2mm, Backing rivet
W004	11	WASHER 4mm. For rivnut screws
W008	5	WASHER 8mm. For 8mm bolts
W010E1	12	WASHER 10mm; Spacer, engine mount / engine
W010E4	1	WASHER 10mm, EF-4C / Fire wall
RUBBER & PLASTIC		
EC-1	1	FOAM STRIP SPX; 25 x 3 x 2000mm; fire wall back cover edge
EM-5	8	ISOLATOR RUBBERS; Engine mount.
ET-6	1	NYLON BUSHING; Throttle pivot, Ø8 x 20mm
WELDMENTS		
EM-1-1	1	ENGINE MOUNT WELDMENT; 618 / 582 Rotax
ET-1A	1	TUBE, vernier throttle
ET-1B	1	ROD, vernier throttle
ET-7B	1	THROTTLE BELL CRANK. Rotax 618 / 582
EXB-1	1	EXHAUST BRACKETS; Rotax 582 / 618
OTHER ITEMS		
FHT-1	1	HEADER TANK, Fibre glass

ENGINE KIT 2010 FOR ROTAX 912 ENGINES

PART NUMBER	QTY	PART DESCRIPTION
ALUMINIUM PARTS		
ET-1C	1	FRICITION NUT; vernier throttle
ET-1E	1	KNOB; Vernier throttle.
COWL & SPINNER		
EC-1A	1	ENGINE COWL, Top
EC-1B	1	ENGINE COWL, Bottom , or
EC-1C	1	EXPLORER - ONE PIECE COWL

BUSHBABY / EXPLORER / SAFARI PARTS CATALOGUE

EC-2	2	PIANO HINGE; Engine cowl sides, 750mm
EC-3	2	WIRE STAINLESS; 1,5mm x 1m for piano hinge
EP-2	1	SPINNER
EP-3A	1	BACKPLATE, spinner.

ELECTRICAL SYSTEM

EE-7	4	FUSE HOLDER
EE-8	2	TOGGLE SWITCH, Magneto & other

GENERAL PARTS

EF-3	2	T-PIECE; Ø8mm Fuel line
EM-4	4	SPACER; Ø14 x 36 mm. EM-5 insert
ET-9	1	ROD-END BEARING 6mm FEMALE, ET-8 Throttle push-pull
MAN-E	1	MANUAL-ENGINE KIT

HARDWARE 1

B0616E4	20	BOLT 6 x 16mm; accessories / fire wall
B0635E1	1	BOLT 6 x 35; Throttle / fuselage.
B0870E1	5	BOLT 8 x 70mm; Engine mount / Fuselage
B10130E1	1	BOLT 10 x 130mm; engine mount bracket, top right
B1090E1	4	BOLT 10 x 90; through bolt/ EM-5
CLE008	5	CLEAVE LOCK NUT. For engine M8
CLE010	4	CLEAVE LOCK NUT. For M10 engine bolts.
FW006E1	10	FENDER WASHERS 6mm. Accessories/ fire wall
FW006E2	4	FENDER WASHERS 6mm. ER-1 brackets / fire wall
FW008E1	3	FENDER WASHERS 8mm. Engine mount lower tube / fire wall
FW010E1	4	FENDER WASHER 10 x 3mm, Engine isolator rubbers
N006E1	2	NUT 6mm, lock nut / B0630E2
NY006	27	NYLOCKS 6mm, For 6mm bolts & other
W006	22	WASHERS 6mm, For 6mm bolts & other
W008E1	7	WASHERS 8mm
W010	6	WASHER 10mm. For 10mm bolts

HARDWARE 2

AL3208E1	40	RIVET 3.2 x 8 AL; COUNTER SUNK, Piano hinge / engine cowl
B1045E1	1	BOLT 10 x 45; Ring / engine casing
B1050E1	3	BOLT 10 x 50; Ring / engine casing.
BB8003E1	2	BRONZE BUSH Ø8 x 3mm; ET-7A & B / fuselage
BU0416E1	9	BUTTON HEAD SCREW 4 x 16; Spinner / backplate
BU0616E1	6	BUTTON HEAD SCREW 6 x 16mm. EC-1/ CF-21

BU06	19	BUTTON HEAD SCREW 6mm. Engine cowl
RIV06	19	RIVNUT 6mm. Engine cowl
N006E2	1	NUT 6mm LOCK NUT. Rod-end bearing / bell crank
RIV004E1	9	RIVNUT 4mm. Spinner / spinner backplate
RIV006E1	6	RIVNUT 6mm. Engine cowl/CF-21
W004	9	WASHER 4mm. For rivnut screws

RUBBER & PLASTICS

EG-2	1	NEO RUBBER PAD MATERIAL; 25 x 1.5 x 300mm
------	---	---

BUSHBABY / EXPLORER / SAFARI PARTS CATALOGUE

EG-5	1	NEO RUBBER STRIP 25 x 1.6 x 50mm. EB-5 / EM-1B
EM-5	8	ISOLATOR RUBBERS; Engine mount
ET-6	1	NYLON BUSHING; Throttle pivot, Ø8 x 20mm

WELDMENTS

EM-2-1	1	ENGINE MOUNTING WELDMENTS; 912 Rotax
EM-2-6	1	ENGINE Ring; 912 s
ET-1A	1	TUBE, vernier throttle
ET-1B	1	ROD; vernier throttle
ET-7A	1	THROTTLE BELL CRANK; Rotax 912

OTHER ITEMS

FHT-1	1	HEADER TANK, Fibre glass
-------	---	--------------------------

TRICYCLE GEAR KIT (NOSE WHEEL) 2010

PART NUMBER	QTY	PART DESCRIPTION
--------------------	------------	-------------------------

HARDWARE, BOLTS, NUTS & OTHER

B0825N1	2	BOLT 8 x 25; AXLE / FORK
B0840N1	2	BOLT 8 x 40, LNW-15 / Fire wall
B0850N1	2	BOLT 8 x 50; LNW-13 / Fuselage
B1035M1	4	BOLT 10 x 35; rim/ hub/ brake drum.
B1050N1	1	BOLT 10 x 50mm; LNW-5 / LNW-7A
BB1622	1	BRONZE BUSH Ø16 x 22mm; In LNW-7A BRONZE BUSH & WASHER Ø 25x42mm (I.d 18mm) Pivot nose fork
BB2542	1	/ leg
C18150N1	1	CAP SCREW M18 x 150, LNW-2 / LNW-5
FW012N1	4	FENDER WASHER M12, between LNW-14
NY008	4	NYLOCK 8mm; for 8mm bolts & other
NY010	7	NYLOCK 10mm. For 10mm bolts
NY012	1	NYLOCK 12mm. For 12m bolts
NY018	1	NYLOCK 18mm. For pivot bolts
SP003M1	3	SPLIT PIN 3mm. Castle nut / axle
W008	6	WASHER 8mm. For 8mm bolts
W010	7	WASHER 10mm. For 10mm bolts

PREVIOUS TYPE NOSE WHEEL (Before 2008) USED 16mm I.D. BRONZE BUSHES

BB1620	1	BRONZE BUSH Ø16 x 20mm; In LNW-7A
C16150	1	CAP SCREW M16 x 150, LNW-2 / LNW-5
NY016	1	NYLOCK 16mm. For pivot bolts

PARTS

LMW-1	2	WHEEL BEARING 6202 DDU
LMW-2	1	ALUMINIUM HUB; Main wheels.
LMW-5A	1	RIMS 6" INNER.
LMW-5B	1	RIMS 6" OUTER with valve hole.

BUSHBABY / EXPLORER / SAFARI PARTS CATALOGUE

LMW-6	1	SPACER, Ø19 x 35mm between bearings.
LNW-10	2	SPACER; ALUMINIUM Ø19 x 95mm. Rim / fork
LNW-14	6	COMPRESSION ring. LNW-5/ LNW-13
LNW-16	2	NYLON BUSH. Ø16 x 20mm. LNW-5 / LNW-18
LNW-18	1	PIVOT-ROD. Ø10 x 230mm. LNW-5 pivot fuselage
LNW-3	1	TYRE; 15 x 600 x 6
LNW-4	1	TUBE; For N/W tyre
LNW-9	1	AXLE, NOSE WHEEL
MAN-N	1	MANUAL NOSE WHEEL

WELDMENTS

LML-2	2	MAIN LANDING LEGS; Tricycle undercarriage
LNW-13	1	SUSPENSION BRACKET Nose leg/ Fuselage
LNW-17	1	TAIL SKID
LNW-2	1	FORK WELDMENT; Nose wheel
LNW-5	1	SHOCK STRUT. Top pivoting
LNW-7A	1	GUIDE Ø12mm. Compression rings.

CONVENTIONAL GEAR KIT (TAIL WHEEL) 2010

PART NUMBER QTY PART DESCRIPTION

HARDWARE

B0616T1	2	BOLT 6 x 16; LTW-14 to fork.
B0645T1	2	BOLT 6 x 45; LTW-2 / fuselage
B0825T1	2	BOLT 8 x 25mm. LTB-1 / LTW-1
B0850T1	1	BOLT 8 x 50; Leaf spring / Fuselage bushing.
B1075T1	1	BOLT 10 x 75mm. Pivot bolt, weld to fork.
B1090T1	1	BOLT 10 x 90; tail wheel axle.
BB8003T1	2	BRASS BUSH. Ø8 x 3mm. LTW-14 / LTW-3
NY006	4	NYLOCKS 6mm. For 6mm bolt & other.
NY008	1	NYLOCK 8mm. For 8mm bolt & other.
NY010	2	NYLOCK 10mm. For M10 bolts
NY016T1	1	NYLOCKS M16. Pivot bolt shaft
W006	8	WASHERS 6mm. For 6mm bolt & other.
W008	3	WASHERS 8mm. For 8mm bolts.
W010	4	WASHERS 10mm. For 10mm bolts.
W016T1	1	WASHERS 16mm. LTB-4

OTHER PARTS

LTB-5	1	LOCKING TAIL WHEEL - Complete
LTW-1	1	LEAF SPRING, tail wheel (TOP)
LTW-1A	1	DOUBLER SPRING (BOTTOM)
LTW-10	1	SPACER, NYLON; Spring/fuselage
LTW-2	1	PLATE 70 x 35 x 2mm, tailspring / fuselage
LTW-5	2	SPRING, COMPRESSION, Tail wheel steering.

WELDMENTS

LML-1L	1	MAIN LANDING LEG; left side, tail dragger
LML-1R	1	MAIN LANDING LEG; right side, tail dragger

BUSHBABY / EXPLORER / SAFARI PARTS CATALOGUE

LTW-3 1 TAIL WHEEL FORK WELDMENT

OLD TAIL WHEEL ASSEMBLY (NOT LOCKING)

LTB-1 1 STEERING BLOCK. Aluminium with bush.
LTB-4 1 STEEL SHAFT: Pivot in bronze bush
LTW-14 2 BRACKET, RUDDER SPRING / fork. Laser
LTW-4 1 TAIL WHEEL 150mm
LTW-8 1 STEEL SPACER, Wheel axle Ø12 x 50mm.
LTW-8A 1 SPACER TUBE Ø13 x 25mm. Between bearings.
LTW-9 2 BEARING 6200 DDU, Tail wheel.

* Complete Locking Tail Wheel Assembly

LTB-1 1 Tail block with bronze bush fork assembly
LTW-3 1 TAIL WHEEL FORK WELDMENT, with pivot shaft welded
LTW-4 1 Tail wheel
LTW-9 2 Bearings, 6200DDU
B0825T1 2 Bolts, 8x25mm
W008 3 Washers, 8mm
B1090T1 1 Bolt, 10x90mm
NY010 1 Nylock, 10mm
LTW-2 1 Plate 70X35X2mm, tailspring/fuselage
LTW-10 2 Spacers, Nylon; spring/fuselage
W010 5 Washers 10mm
B0645T1 2 Bolts, 6x45mm
NY006 6 Nylocks 6mm
W006 10 Washers 6mm
LTW-1 1 Leaf spring (Top)
LTW-1A 1 Doubler spring (Bottom)
LTW-5 2 Spring, compression
LTC-1 1 Chain with 7 links
B0620-T1 4 Bolts 6x20mm

LANDING GEAR KIT : MAIN 2010

PART NUMBER	QTY	PART DESCRIPTION
BRAKE SYSTEM		
LB-11	1	CABLE SUPPORT BRACKET; 25x25x100mm Angle
LB-12	1	FIRE WALL SUPPORT. 25x50x300mm; LB-11 / fire wall
LB-4	2	BRAKE SHOES (set)
LB-7	4	SPRING, retain brake shoes.
LBL-6	1	BRAKE CABLE; left
LBR-6	1	BRAKE CABLE; right
LBH-2	1	DUAL BRAKE CABLE, hydraulic brakes (optional)
LBH-1	1	HYDRAULIC DISC BRAKES (optional)
LBH-3	1	DUAL HYDRAULIC Torque tube system (optional)

HARDWARE 1

BUSHBABY / EXPLORER / SAFARI PARTS CATALOGUE

B0616M1	2	BOLT 6 x 16; LB-11/ fire wall
B0620M1	4	BOLT 6 x 20; main leg/ brake back plate.
B0645M1	2	BOLT 6 x 30; main leg/ axle
B0870M1	4	BOLT 8 x 70; main leg/ fuselage
B1035M1	8	BOLT 10 x 35; rim/ hub/ brake drum.
BB1240L1	4	BRONZE BUSH Ø12 x 40mm landing leg/ fuselage
BB8003L1	2	BRONZE BUSH Ø8 x 3mm. LB-1/ LB-9.
FW006M1	2	FENDER WASHERS 6mm; LB-11/ Fire wall
N008M1	2	NUT 8mm, Lock nut, brake sleeve/ LB-9
NY006M1	8	NYLOCK 6mm.
NY006M2	2	NYLOCK 6mm, LB-9 / LB-1
NY006M3	2	NYLOCK 6mm, Brake cable ends
NY008M1	4	NYLOCK 8mm, for B0870M1
NY010	8	NYLOCK 10mm, For M10 bolts.
CN14	2	CASTEL NUT for M14
W006M1	12	WASHER 6 mm, For cable ends & LB-9.
W008M1	4	WASHER 8mm.
W010M1	8	WASHER 10mm.
W014M1	2	WASHER 14mm. Axle
HARDWARE 2; OTHER		
AL3208M1	8	RIVET 3.2 x 8mm. LB-12/ fire wall.
RW32M1	8	RIVET WASHERS 3.2mm. Rivet backing
SP002M1	1	SPLIT PIN 2mm. Coller / toe brake weldment.
OTHER PARTS		
LB-8	1	COLLARS; Ø19 x 10mm. Toe brake
LMG-1	1	SHOCK CORD; Ø12mm, 4500mm
LMG-2	4	HOSE CLAMP G8, Shock cord.
LMG-4	1	NEO RUBBER, 25 x 1.6 x 100mm. Shock pad, main gear.
LMG-8	2	AXLES; Main gear. Ø16mm. M14 thread.
MAN-L	1	MANUAL - LANDING GEAR.
WELDMENTS.		
LB-1	1	TOE BRAKE WELDMENT, Fire wall (2 sections)
LB-2L	1	BRAKE FLANGE; Left side.
LB-2R	1	BRAKE FLANGE; right side.
LB-5	2	BRAKE DRUM
LB-9	2	PIVOT BOLT, brake cable / LB-1
WHEEL ASSEMBLY		
LMW-1	4	WHEEL BEARING 6202 DDU
LMW-2	2	ALUMINIUM HUB; Main wheels.
LMW-3	2	TYRE
LMW-4	2	TUBE
LMW-5A	2	RIMS 6" INNER
LMW-5B	2	RIM 6" OUTER with valve hole
LMW-6	2	SPACER, Ø19 x 35mm between bearings.

FUSELAGE KIT 2010

PART NUMBER	QTY	PART DESCRIPTION
ALUMINIUM PARTS		
FCS-B	2	CONTROL STICK Ø19 mm
FCT-7A	1	PUSH-PULL, Ø25x3050mm, aluminium; Elevator aft (BB & EXP)
FCT-7B	1	PUSH-PULL, Ø25x3225mm, aluminium; Elevator aft (SAF)
FCT-8	2	END FITTING for FCT-7 Aluminium threaded
FRB-3	2	SQUARE TUBE 12x12x720mm. FRB-1 cap strip
FRP-4	1	ANGLE 25x25x3x140mm. Rubber pedal mount
HARDWARE 1		
B0625F2	2	BOLT 6 x 25: FBC-1/ FCT-2, FCT-1 (Front) rod-ends
B0625F3	1	BOLT 6 x 25: Flap lever/FCT-3 front rod end.
B0625F4	1	BOLT 6 x 25: FCT-1, Right rod-end/ FCS-A
B0625F5	2	BOLT 6 x 25: FCT-4 bottom rod-end/ FBM-B
B0625F6	1	BOLT 6 x 25: FCC/ FCT-6 front rod-end
B0625F7	1	BOLT 6 x 25: FCT-3 rod-ends aft/ FBM-A
B0625F8	1	BOLT 6 x 25: FCT-5 aft rod-end/ FEV-2 horn.
B0625F9	1	BOLT 6 x 25: FCT-2 rod-end/ FBM-B (6x25 = 10)
B0630F3	1	BOLT 6 x 30: FCS-A/ 2x rod-ends FCT-1
B0630F6	2	BOLT 6 x 30: FCT-4 top rod-end /WFL-10 (6 x 30 = 3)
B0635F1	2	BOLT 6 x 35: Cntr stick/ cntr stick housing
B0635F2	2	BOLT 6 x 35: FBM-A / Nylon bushes FBM-B
B0635F5	1	BOLT 6 x 35: FBC-3/FCT-6 rod-end aft.
B0635F6	1	BOLT 6 x 35: FBC-3 idler arm/ fuselage (6 x 35 = 6)
B0650F1	1	BOLT 6 x 50: Flap lever/ fuselage tabs
B0650F3	2	BOLT 6 x 50: FBM-A/ fuselage mount (6 x 50 = 3)
B0660F1	2	BOLT 6 x 60: FCS-1 / controle column
B0680F1	1	BOLT 6 x 80: FBC-1 / fuselage
HARDWARE 2		
B0616F3	2	BOLT 6 x 16; horis stab strut/ fuselage.
B0620F2	2	BOLT 6 x 20; rudder horn/ rudder adj link.
B0620F8	4	BOLT 6 x 20; Door / fuselage hinge (6 x 20 = 6)
B0625F10	4	BOLT 6 x 25; FRP-4 angle/ floor board
B0630F4	2	BOLT 6 x 30; horizontal stabilizer/ fuselage.
B0635F3	4	BOLT 6 x 35; nylon bush in FBR-3/ FRP-4.
B0635F7	2	BOLT 6 x 35; FHS-2 rear strut/ FHS-1. (6 x 35 = 6)
B0640F1	2	BOLT 6 x 40; FCT-8/ FCT-7
B0645F1	2	BOLT 6 x 45; FCF-4 / front FHS-2 / FHS-1
C0665F1	4	CAP SCREW 6 x 65; FBR-1 / Floor board.
HARDWARE 3		
AL3208F1	6	RIVETS 3.2x8 AL; FB / fuselage
AL3208F2	11	RIVETS 3.2x8 AL; stringer bracket/ fuselage (3.2 x 8 = 17)

BUSHBABY / EXPLORER / SAFARI PARTS CATALOGUE

AL3212F1	10	RIVETS 3.2x12 AL; floor boards/ fuselage
AL3212F2	8	RIVETS 3.2x12 AL; Cap strip / butt rib
AL3212F3	12	RIVETS 3.2x12 AL; Butt rib / FB (3.2 x 12AL = 30)
BB8003F1	2	BRONZE BUSH Ø8 x 3mm. FRP-2 / rudder weldmnt
BB8003F2	2	BRONZE BUSH Ø8 x 3mm. FRP-5 / rudder pedals.
BB8007	2	BRONZE BUSH Ø8 x 7mm. FBM-A / Fuselage pivot
BB8025	1	BRONZE BUSH Ø8 x 25mm. FBC-3 / Fuselage.
BB8039	2	BRONZE BUSH x 39mm, FCS-A pivot.
BB8069	1	BRONZE BUSH Ø8 x 69mm. FBC-1 / Fuselage
CI030F1	1	CIRCLIP Ø30mm. FEV-1 / Fuselage bush
CP0665F1	8	CLEVIS PINS 6 x 65mm; Hinge pins: rudder & elevator.
LE040F1	1	LEATHER WASHERS 40mm; flap handle.
SP02F1	2	SPLIT PIN 2mm; FCT-4 TOP / WFL-10
N006F1	23	NUTS 6mm; Check nuts for rod-end bearings
NY006	63	NYLOCKS 6mm. For 6mm bolts & other.
SP002F1	8	SPLIT PINS 2mm; Hinges pins.
W006F1	90	WASHER 6mm; Bolt, rod-end spacer
WI006F1	2	WING NUT or NYLOCKS 6mm

NYLON AND PLASTIC

FBR-1	2	BEARING Ø38mm. Blue nylon for FCC
FBR-2	2	BEARING Ø23 x 20mm. Nylon for FBM-A
FBR-3A	4	BEARING; Rudder pedal-nylon Ø15.5 x 20mm.
FBR-3B	3	BEARING Ø19mm. Blue nylon for FRP-1B (SAF)
FBR-4	1	NYLON TUBE Ø8mm x 1m. Bearing material, fuselage tubes.
FEV-1	1	BUSHING Ø32 x 30mm. FCT-7 Nylon guide.

OTHER ITEMS

FC-1	13	ROD-END BEARINGS; 6mm, FEMALE
FC-2	1	ROD-END BEARINGS; 6mm, MALE, FBC -1/FCC
FC-3	2	ROD-END BEARING; 6mm, MALE, Ends FCT-7
FC-4	4	ROD=END BEARING; 6mm MALE FHS-2 ends.
FEV-4A	2	HOSE CLAMP, G16. FCT-7 stop
FRP-10	1	SHRINK SLEEVE, 300mm Rudder cable
FRP-2	2	RUDDER LINK ADJUSTABLE PLATE, FR/FRP-3
FRP-3A	1	CABLE; Ø3 x 9150mm. Rudder (cut 2) BB & EXPL
FRP-3B	1	CABLE; Ø3 x 9800mm. Rudder (cut 2) SAFARI
FRP-5	2	RUDDER PEDAL LINK, FRP-1/FRP-3
FRP-6	2	SPRINGS; Rudder return.
FRP-7	8	NICROPRESS SLEEVES, 3mm, Rudder cable
FRP-8	4	THIMBLES; for FRP-3
MAN-F	1	MANUEL-FUSELAGE

WELDMENTS(PART A)

FBC-1	1	BELLCRANK aileron,
FBM-A	1	MIXER, FLAPS, one horn.
FBM-B	1	MIXER aileron, 2 Horn
FCC-1A	1	CONTROL COLUMN HOUSING (440mm BB & EXP)
FCC-1B	1	CONTROL COLUMN HOUSING (490mm SAF)
FCS-A	2	CONTROL STICK HOUSING
FCT-1A	1	PUSH PULL TUBE; Controle stick (350mm BB & EXP)

BUSHBABY / EXPLORER / SAFARI PARTS CATALOGUE

FCT-1B	1	PUSH PULL TUBE; Controle stick (410mm SAF)
FCT-2A	1	PUSH PULL TUBE; Aileron (780 mm BB & EXP)
FCT-2B	1	PUSH PULL TUBE; S-Shape Aileron (830 mm SAF)
FCT-3A	1	PUSH PULL TUBE 660mm; Flap BB, EXP & SAF)
FCT-4A	2	PUSH PULL TUBE; Flapperon vertical (470mm BB)
FCT-4B	2	PUSH PULL TUBE; Flapperon vertical (475mm & 505mm each EXP)
FCT-4C	2	PUSH PULL TUBE; Flapperon vertical (510 & 495 mm SAF)
FCT-5	1	PUSH PULL TUBE; Elevator Aft (2910mm BB)
FCT-6	1	PUSH PULL TUBE; Elevator front (650mm BB, EXP, SAF)

WELDMENTS (PART B)

FB	6	BUTT RIB MOUNT
FBC-3	1	IDLER ARM, elevator
FDR-L	1	DOOR FRAME, left side.
FDR-R	1	DOOR FRAME, right side.
FEV-2A	1	ELEVATOR (BB)
FEV-2B	1	ELEVATOR - Increased volume (EXP & SAF)
FHS-1	1	HORIZONTAL STABILIZER (Tailplane)
FHS-2	4	HORIZONTAL STABILIZER STRUT
FLP	1	FLAP HANDLE
FR-1A	1	RUDDER (BB & EXP)
FR-1B	1	RUDDER - Large (SAF)
FRP-1A	2	RUDDER PEDALS, left or right (BB & EXP)
FRP-1B	2	RUDDER PEDALS, left or right. (SAF)
FSB-1	11	STRINGER BRACKET; adjustable.
FUS	1	FUSELAGE MAIN STRUCTURE
WJS-1	2	JURY STRUT
WLS-L	1	LIFT STRUT, left hand
WLS-R	1	LIFT STRUT, right hand.

WOODEN PART

FLB	2	FLOOR BOARDS; 3mm Plywood
FRB-1	2	BUTTRIB; 6mm Aluminium

WING KIT 2010 STOL

PART NUMBER	QTY	PART DESCRIPTION
ALUMINIUM		
WE-1	1	ANLGE 12 x 19 x 4000mm. Wing tip mount.
WFL-4	36	ANGLE 12 x 19 x 160mm. Flapperon bracket or
	16	Flapperon Brackets - Laser cut (steel)
WFL-6	20	PLATE 28 x 0.9 x 135mm. WFL-4 backing.
WPT	1	PITOT TUBE
WSP-1	4	SPARS; 4050mm
WST-1A	2	ANGLE 12 x 19 x 3350mm.Top rib support
WST-1B	2	ANGLE 12 x 19 x 4000mm. Bottom rib support
WT-5	2	TUBE Ø10 x 130mm. Fuel tank vents or <i>already fitted into fuel caps</i>
WTE	2	FLAT BAR 12 x 3 x 4400mm. Trailing edge
HARDWARE 1		
B0616W1	4	BOLT 6 x 16; jury strut/ WJS-4
B0616W2	4	BOLT 6 x 16; jury strut/ WJS-3
B0616W4	4	BOLT 6 x 16; WBB/ fuselage/ wing.
B0865W1	2	BOLT 8 x 65; lift strut/ fuselage.
B0865W2	4	BOLT 8 x 65; lift strut/ WBK.
B0890W1	2	BOLT 8 x 90; Rear spar/ fuselage.
C0616W1	20	CAP SCREW 6x16 WFL-4 / Flapperon.
CP0870	2	CLEVIS PIN 8 x 70mm; front spar/ fuselage.
N010W1	4	SPLIT NUT 10mm; Check nut on rod-end
NY008	8	NYLOCKS 8 mm. For 8mm bolts & other.
NY006	32	NYLOCKS 6mm. For 6mm bolts & other.
W006	60	WASHERS 6 mm. For 6mm bolts & others
W008	20	WASHERS 8mm. For 8mm bolts.
SB1236	1	STEEL BUSH; Ø12x36mm for 8mm bolt; Lift strut to fuselage
HARDWARE 2		
AL3206W4	40	RIVET 3.2 x 8 AL. wing tip / rib.
AL 3206W5	60	RIVETS 3.2 x 8 AL, WT/WE-1
AL3208W1	168	RIVET 3.2 x 8 AL; WFL-4 / ribs.
AL3208W3	16	RIVET 3.2 x 8 AL; WFL-10 / Flapperon
AL3208W4	40	RIVET 3.2 x 8 AL; WE-1/Tip rib (Rivets 3.2x8 = 324)
LR002W1	2	LOCKRINGS 2mm for CP0870.
SS408W1	8	RIVET 4 x 12 Steel; WJS-4 / spar
SS408W2	8	RIVET 4 x 12 Steel; WFL-2/ flapperon
SS408W3	28	RIVET 4 x 12 Steel: WSP-2, Spar reinforcement tube
SS412W1	216	RIVET 4 x 12 Steel; WBR-1/ spar; WBK/main spar (Rivets4x12 = 260)
ST312W1	8	WOOD SCREW 3 x 12mm; Spar stiffener / spar
OTHER PARTS		
MAN-W	1	MANUAL-WING

BUSHBABY / EXPLORER / SAFARI PARTS CATALOGUE

WBR-1	6	TUBE Ø16 x 1180 mm. Diagonal wing braces
WFL-1	2	FLAPPERON; STOL WING. Left or right, 3940mm
WFL-3	2	LEAD filled T-HEAD, balance weight.
WJS-4	4	BRACKETS, Spar/ WJS-1
WLS-1	4	BUSHES: Ø10 x 32mm. Lift strut/spar bracket
WLS-2	2	SPACERS; Ø12 x 50mm. Spar/Lift strut. (cut 4)
WLS-3	4	ROD-END BEARINGS; 10mm MALE. Lift strut/WBK
WSP-3	2	SPAR REINFORCEMENT TUBE; Steel Ø58x100mm
WT-3	2	HOSE BARB Ø8mm fuel tank outlet.
WT-4	2	WATER DRAIN TAP

PLASTIC AND FIBREGLASS

WFL-7	4	NYLON BUSH; Flapperon hangers
WFL-8	2	NYLON BEARING;75x100x4mm, flapperon/ turtle deck.
WJS-3	4	P-CLAMPS 25mm. Jury to lift strut.
WLE-2B	8	LEADING EDGE, Fibre glass
WPL	4	TUBING; Ø6mm x 1 Meter. Pitot line(airspeed)
WSA-D	1	EPOXY; universal two part. 2kg
WT	2	WING TIP.
WT-1	2	FUEL TANK, wing
WT-2	2	CAP; Wing fuel tank.

WELDMENTS

WBK	4	BRACKET, Spar to lift strut
WFL-10	2	MASS BALANCE weldment & elbow
WFL-2	2	FLAPPERON CONTROLE HORN
WFL-5	4	FLAPPERON HANGER

WOODEN PARTS

WCS-1	52	CAP STRIP, MAIN RIB. 1200 x 25 x 1.5mm plywood
WCS-5	8	CAPSTRIP, SPAR STIFFENER, 6mm marineply 25 x 1200mm.
WRB-1	10	RIBS; 6mm marineply
WRB-2	12	RIBS; 4mm marineply
WRB-4	4	RIB, fuel tank bay, 4mm marineply
WSS-1A	4	WEB, spar stiffener, marine ply, 47 x 1200 x 6mm.
WSS-1B	4	Doubler for Safari wings - 58mm 2mm tube x 1m, 6061 T6 Alliminium