

ADDENDUM

TO THE

BUSHBABY ASSEMBLY

MANUAL

LANDING GEAR MANUAL

AFFECTED PAGES

PAGE

L2

L3

L4

L5

L6

L7

L9

L10

L11 MOVED TO TAIL WHEEL ADDENDUM

See the attached parts list for exploded views of the assembly. Any changes to the parts list will be indicated on the website www.saplanes.co.za

PAGE L2

1. The legs pivot on a \varnothing 12mm bronze bush. The hole needs to be cleaned/ filed to except the bronze bush. The bush must be a tight fit between the lugs on the fuselage (38-39mm). Shorten the bush as needed.

Once installed the leg will pivot around the bush and **not around the bolt.**

2. M14 nylocks are used on the axles

3. The LNW-2 fork does not need reworking.

PAGE L3:

4 ignore the instruction.

5. The axle tube distorts during the welding process. With a file remove any welding spots. Ideally the axle should slide into the tube. Remember the axle will have to be removed one day. If it a tight fit it will difficult to exchange axles in the field.

PAGE L4

2. The 10mm bolt holes are punched. The punching some times causes the hole rim to make a ridge. The ridge causes the brake drum to sit skew, (the drum is not flush on the rim). This causes the drum to wobble and makes the brake shoe fitment difficult. Ensure that the drum sits flat on the rim. Remove any ridges with a file or large drill bit.

3. Trim the LMW-6 spacer so that it fits tightly between the two bearings. This transmits the side loads from the bearing to the leg.

(New step)

4. Fit the axle to the wheel assembly (brake drum included). The tyre is not needed at this time.

5. slide the axle into the axle-tube until the bearing seats against the axle-tube.

PAGE L5

1. When the brake shoe assembly is fitted into the brake drum, the brake shoes will need to be filed for the shoes to fit into the drum. The drum/ shoe fit must be as tight as possible.
2. The backing plate flange has predrilled 6mm holes in them. Install the backplate as per manual, using the 6mm holes to back-drill into the backing plate

PAGE L6

4. The brake cable must not be fitted under the floor as this causes the cable to make a sharp curve at the firewall edge. Install the cable at the firewall and on the backing plate. Route the cable up along the leg and under the belly. Keep on checking the brake operates freely.

PAGE L7

5. With a hacksaw cut a 2-3mm slot in the lock pin, for the inner cable to fit through.

PAGE L9

3. Do not burn the bungee ends. Cut the shock cord in half. Wrap a piece of insulation tape at the place where the cord must be cut. Cut through the cord, the tape will prevent the cord from unravelling.

As per the manual make a loop in one end of the cord.

For the next step a tape measure and marking pen is needed.

Lay the cord on a flat surface, measuring from the inside of the loop make ten (10) marks 125mm apart. Make a loop on the tenth mark. Fit the cable ties but do not install the hose clamp. This will be fitted after the bungee is installed.

DO NOT CUT OFF THE EXCESS SHOCK CORD.

For the next step

500mm thin nylon rope

A strong assistant (if available another assistant)

Working from the middle of the fuselage outwards, hook the loop with the hose clamp to the post on the truss (sketch page L10). Pull the cord until each mark is on the centre of the tube. Use the rope through the loop to pull the last few marks in position and to hook the loop over the post.

There will now be 5 wraps on the leg and 4 wraps on the truss.

PAGE L10

6. the gear limit cable is an option. If the shock cord should snap (never happened yet) the cable will kinck the tube causing the leg to collapse.

PAGE L11

See tail wheel addendum for tail wheel assembly

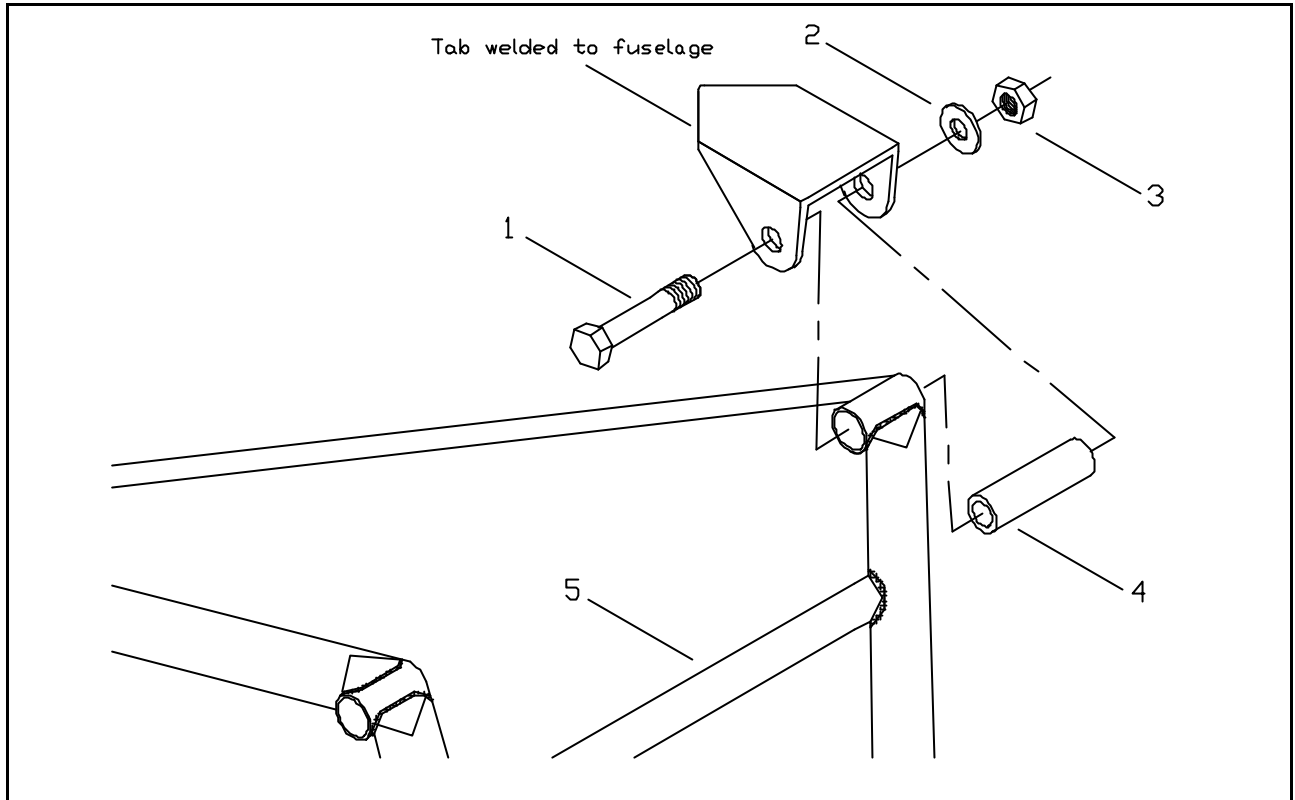


Fig Ref No:	Part Number	Part description	Qty Per assembly	Notes
1	B0870	Bolt 8 x 70	2	
2	W008	Washer M8	2	
3	NY008	Nylock M8	2	
4	BB1240	Bronze bush ø 12 x 40mm	2	
5	LML-1L	Landing gear leg. T/d left	1	Left hand shown

1. MAIN LEG ASSEMBLY, UPPER

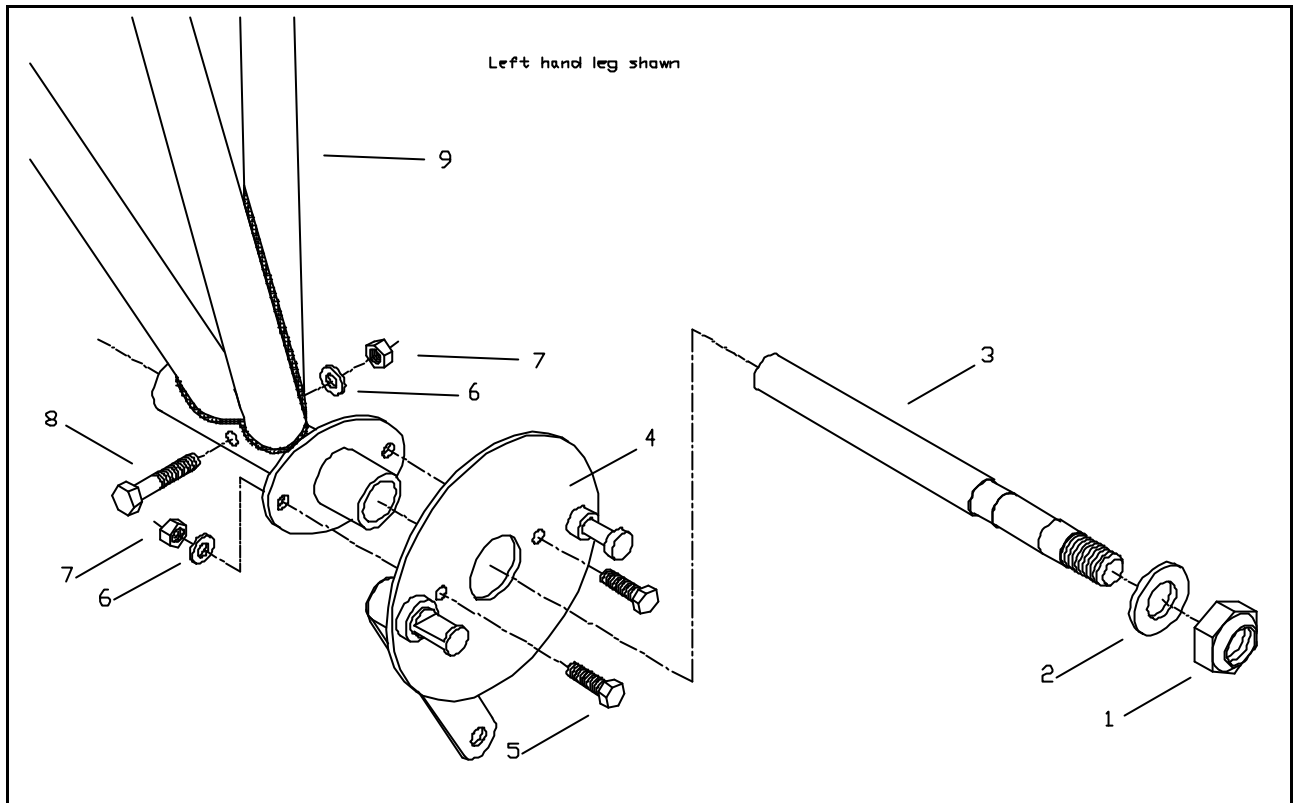


Fig Ref No:	Part Number	Part description	Qty Per assembly	Notes
1	NY012	Nylock m12	1	
2	W012	Washer M12	1	
3	LMG-8	Axle	1	
4	LB-2L	Brake backing plate. left	1	
5	B0620	Bolt 6 x 20	2	
6	W006	Washer M6	3	
7	NY006	Nylock M6	3	
8	B0645	Bolt 6 x 65	1	
9	LML-1L	Landing gear leg. Tail dragger LH	1	

2. MAIN LEG ASSEMBLY, LOWER

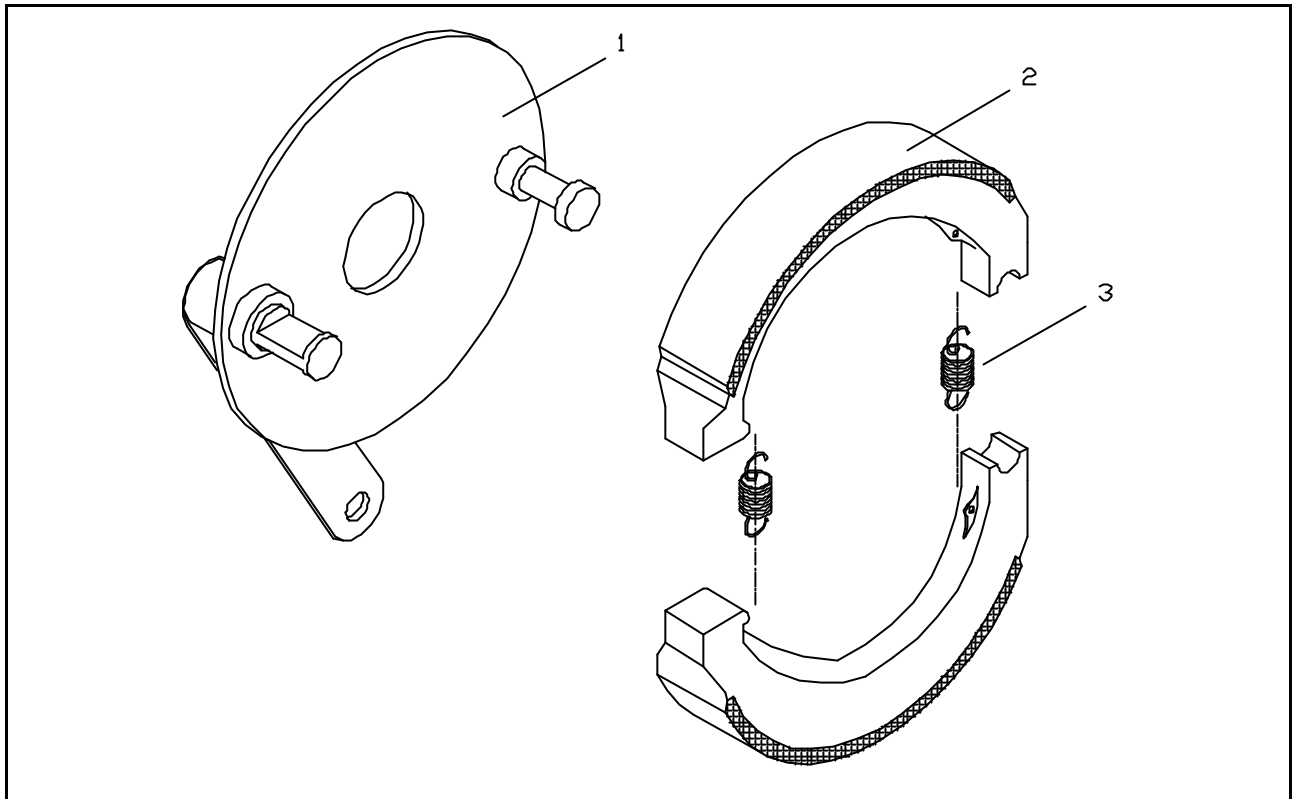


Fig Ref No:	Part Number	Part description	Qty Per assembly	Notes
1	LB-2L	Brake flange: left Hand	2	
2	LB-4	Brake shoes (set)	2	
3	LB-7	Spring, retain brake shoes	2	

3. BRAKE SHOE ASSEMBLY

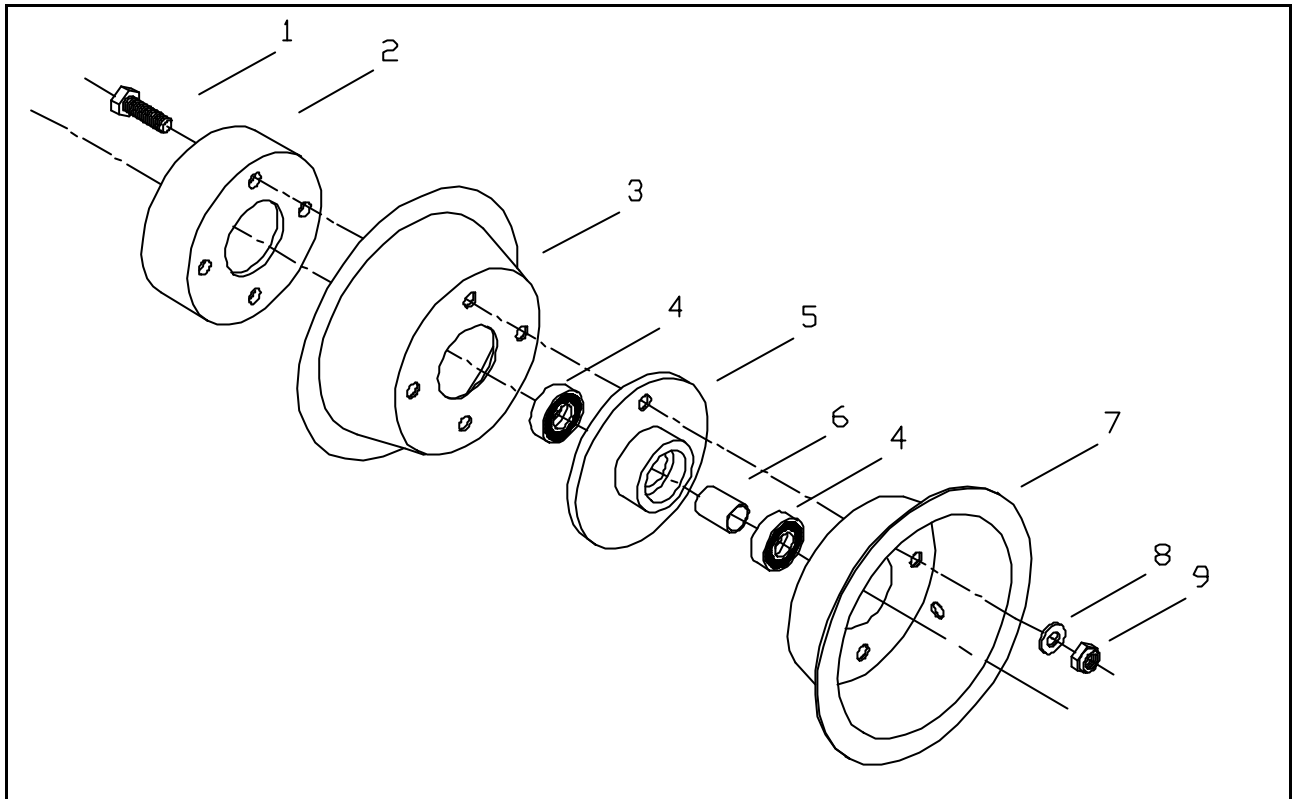


Fig Ref No:	Part Number	Part description	Qty Per assembly	Notes
1	B1O35M1	Bolt 10 x 35; rim, hub, brake drum	4	
2	LB-5	Brake drum	1	
3	LMW-5A	Rim 6", inner	1	
4	LMW-1	Bearing, 6205 DDU	2	
5	LMW-2	Hub, aluminium	1	
6	LMW-6	Spacer tube, ø 19 aluminium	1	
7	LMW-5B	Rim 6", outer. With valve hole	1	
8	W010	Washer M10	4	
9	NY010	Nylock M10	4	

4. WHEEL ASSEMBLY