

KITPLANES FOR AFRICA
www.saplanes.co.za
P.O.Box 326
KOMATIPOORT
1340
South Africa

Rick Burrough 082 410032 Stefan Coetzee 082 6018970
info@saplanes.co.za

SERVICE LETTER

AIRCRAFT EFFECTED: All models

BULLETIN NUMBER: SL008

ORIGINAL ISSUE DATE: 30-12-06

REVISION DATE: 21-11-08

SUBJECT: Fitting spring gear

APPLICABILITY: All KFA aircraft

COMPLIANCE: Advisory

Overview:

KFA airframes were designed to be fitted with tubular steel main under gear with shock cord suspension.

Grove aluminium spring gear may be fitted with some modification to the fuselage.

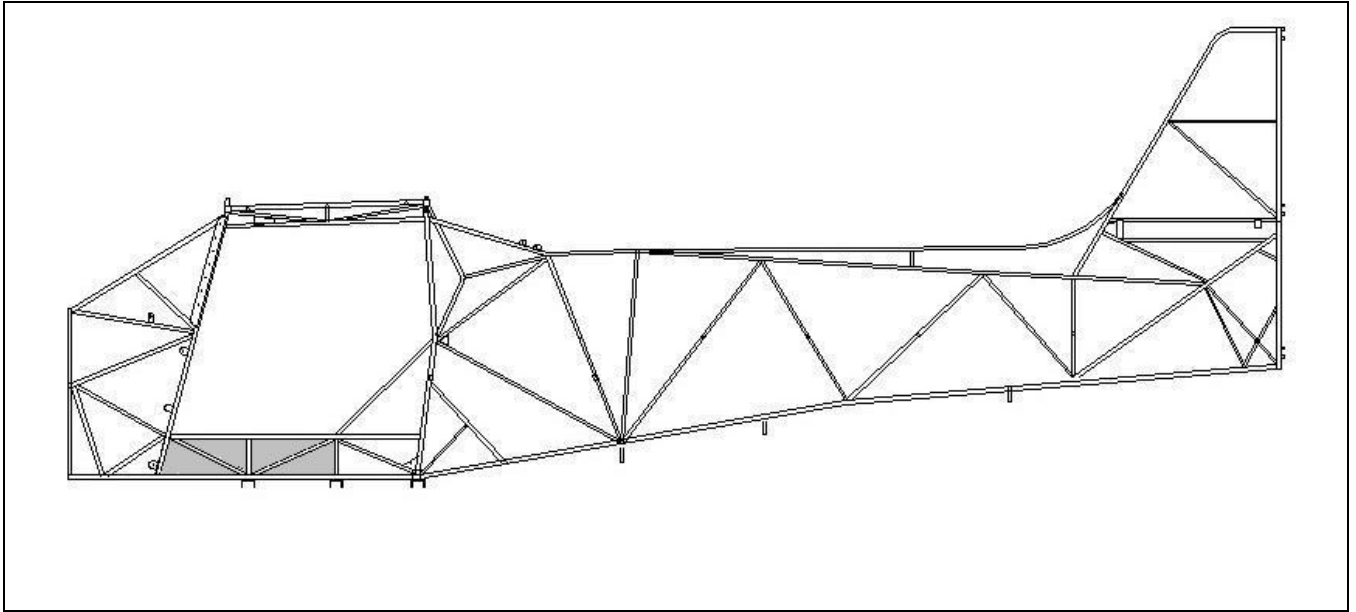
The modification is CAA approved provided the welding is carried out at the factory or by another qualified welder.

The modification is approved for tail-wheel configuration only.

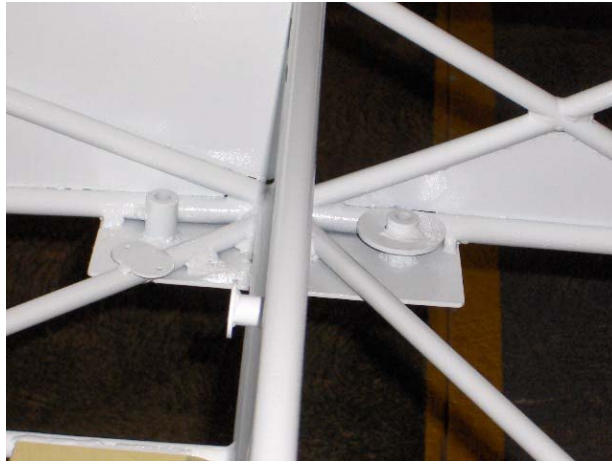
NOTE: Consult the installation instructions supplied with the Grove undercarriage system.
--

Procedure:

- Support the aircraft on trestles so that the undercarriage is clear of the ground. Trestles must support the frame where there are vertical braces or the longeron tubes will bend.
- Remove the old gear, cut of the old forward undercarriage tabs.
- Weld in gusset side plates from 1.6mm cold rolled steel according to the shaded area of the drawing.



- Weld in bottom gussets from 2mm plate each side of the forward bungee truss where the spring gear block will mount.
- Dry fit the gear to ensure that the spring gear is perpendicular to the fuselage centre line. Measure to the tail post. The block will straddle the bungee truss
- Mark the position of the retaining bolts using the Grove supplied radius blocks. The blocks must be fitted.
- Drill an $\text{\O}20\text{mm}$ hole in the bottom gusset, where the AN7gear retaining bolts will attach to.
- Weld an $\text{\O}20 \times 45\text{mm}$ steel tube onto the lower gusset, ensuring that the tube contacts the lower longeron and is welded to it. This will form the bolt points for the block.



- Install the gear according to the supplied Grove instructions
- Fit the hydraulic brake system according to the instructions.
- Remove the trestles and check that no damage was done to any of the lower longeron members.
- Check the wheel alignment, shim for a slight toe in.
- Record the modification in the log book.
- Complete and record a new weight and balance calculation.
- Have an Approved Person sign out the work.
- Submit a notification of modification to the CAA.

